

NATIONAL CRANE

by 

LOAD CHARTS NBT55

**85% STABILITY
ON OUTRIGGERS**

SERIAL NUMBER

TABLE OF CONTENTS

GENERAL NOTES	4-5
WT. REDUCTIONS / LINE PULLS & REEVING INFO / HOIST PERFORMANCE	6
LIFTING AREA DIAGRAM / BASKET LMI OPERATING CODES	7
RANGE DIAGRAM w/ EXTENSION	8

WITH 6000 lb COUNTERWEIGHT

ON OUTRIGGERS FULLY EXTENDED

MAIN BOOM 360°	9
MAIN BOOM 360° with 26' FIXED or 26-45' TELE EXTENSION STOWED	10
MAIN BOOM 360° with 26' ERECTED or 26-45' TELE EXT ERECTED, RETRACTED	11
MAIN BOOM 360° with 26-45' TELE EXT ERECTED, EXTENDED	12
MAIN BOOM OVER REAR	13
MAIN BOOM OVER REAR with 26' FIXED or 26-45' TELE EXTENSION STOWED	14
EXTENSION 360°	15
EXTENSION OVER REAR	16

ON OUTRIGGERS 50% EXTENDED

MAIN BOOM 360°	17
MAIN BOOM 360° with 26' FIXED or 26-45' TELE EXTENSION STOWED	18
MAIN BOOM 360° with 26' ERECTED or 26-45' TELE EXT ERECTED, RETRACTED	19
MAIN BOOM 360° with 26-45' TELE EXT ERECTED, EXTENDED	20
EXTENSION	21

ON OUTRIGGERS 0% EXTENDED

MAIN BOOM 360°	22
MAIN BOOM 360° WITH 26' FIXED or 26-45' TELE EXTENSION STOWED	23

WITH 3000 lb COUNTERWEIGHT

ON OUTRIGGERS FULLY EXTENDED

MAIN BOOM 360°	25
MAIN BOOM 360° with 26' FIXED or 26-45' TELE EXTENSION STOWED	26
MAIN BOOM 360° with 26' ERECTED or 26-45' TELE EXT ERECTED, RETRACTED	27
MAIN BOOM 360° with 26-45' TELE EXT ERECTED, EXTENDED	28
MAIN BOOM OVER REAR	29
MAIN BOOM OVER REAR with 26' FIXED or 26-45' TELE EXTENSION STOWED	30

TABLE OF CONTENTS (cont'd.)

WITH 3000 lb COUNTERWEIGHT (cont'd.)

ON OUTRIGGERS FULLY EXTENDED (cont'd.)

EXTENSION 360°	31
EXTENSION OVER REAR	32

ON OUTRIGGERS 50% EXTENDED

MAIN BOOM 360°	33
MAIN BOOM 360° with 26' FIXED or 26-45' TELE EXTENSION STOWED	34
MAIN BOOM 360° with 26' ERECTED or 26-45' TELE EXT ERECTED, RETRACTED	35
MAIN BOOM 360° with 26-45' TELE EXT ERECTED, EXTENDED	36
EXTENSION	37

ON OUTRIGGERS 0% EXTENDED

MAIN BOOM 360°	38
MAIN BOOM 360° WITH 26' FIXED or 26-45' TELE EXTENSION STOWED	39

WITH NO COUNTERWEIGHT

ON OUTRIGGERS FULLY EXTENDED

MAIN BOOM 360°	41
MAIN BOOM 360° with 26' FIXED or 26-45' TELE EXTENSION STOWED	42
MAIN BOOM 360° with 26' ERECTED or 26-45' TELE EXT ERECTED, RETRACTED	43
MAIN BOOM 360° with 26-45' TELE EXT ERECTED, EXTENDED	44
MAIN BOOM OVER REAR	45
MAIN BOOM OVER REAR with 26' FIXED or 26-45' TELE EXTENSION STOWED	46
EXTENSION 360°	47
EXTENSION OVER REAR	48

ON OUTRIGGERS 50% EXTENDED

MAIN BOOM 360°	49
MAIN BOOM 360° with 26' FIXED or 26-45' TELE EXTENSION STOWED	50
MAIN BOOM 360° with 26' ERECTED or 26-45' TELE EXT ERECTED, RETRACTED	51
MAIN BOOM 360° with 26-45' TELE EXT ERECTED, EXTENDED	52
EXTENSION	53

ON OUTRIGGERS 0% EXTENDED

MAIN BOOM 360°	54
MAIN BOOM 360° WITH 26' FIXED or 26-45' TELE EXTENSION STOWED	55

NOTES FOR LIFTING CAPACITIES

GENERAL:

1. Rated loads as shown on lift chart pertain to this machine as originally manufactured and equipped. Modifications to the machine or use of optional equipment other than that specified can result in a reduction of capacity.
2. Construction equipment can be hazardous if improperly operated or maintained. Operation and maintenance of this machine shall be in compliance with the information in the Operator's and Safety Handbook, Service Manual and Parts Manual supplied with this machine. If these manuals are missing, order replacements from the manufacturer through the distributor.
3. The operator and other personnel associated with machine shall fully acquaint themselves with the latest American National Safety Standards (ASME/ANSI) for cranes.

SETUP:

1. The machine shall be level and on a firm supporting surface. Depending on the nature of the supporting surface, it may be necessary to have structural supports under the outrigger floats or tires to spread the load to a larger bearing surface.
2. For outrigger operation, all outriggers shall be properly extended with tires raised free of crane weight before operating the boom or lifting loads.
3. When machine is equipped with center front stabilizer, the front stabilizer shall be set in accordance with instructions in Operator's and Safety Handbook.
4. When equipped with removable and/or extendible counterweight, the proper counterweight shall be installed and fully extended before and during operation.
5. With certain boom and hoist tackle combinations, maximum capacities may not be obtainable with standard cable lengths.
6. Unless approved by the crane manufacturer, do not travel with boom extension or jib erected unless otherwise noted. Refer to Operator's and Safety Handbook for job-site travel information.
7. Inspect vehicle and crane including crane operation prior to use each day.
8. Always level the crane with the level indicator located at each outrigger control station.

OPERATION:

1. Rated loads at rated radius shall not be exceeded. Do not attempt to tip the machine to determine allowable loads. For clamshell, grapple, magnet or concrete bucket operation, weight of component and load must not exceed 80% of rated lifting capacities.
2. All rated loads have been tested to and meet the requirements of SAE J1063 - Cantilevered Boom Crane Structures - Method of Test, and do not exceed 85% of the tipping load on outriggers fully extended, and SAE J1289 - Mobile Crane Stability Ratings [1.25P < (T-0.1A)] on outriggers 50% and 0% extended (fully retracted) as determined by SAE J765 - Crane Stability Test Code.
3. Rated loads include the weight of hookblock, slings and auxiliary lifting devices and their weights shall be subtracted from the listed rating to obtain the net load to be lifted. When more than the minimum required parts of line needed to pick the load are used, the additional rope weight as measured from the lower sheaves of the main boom nose shall be considered part of the load to be lifted. When both the hook block and headache ball are reeved, the lifting device that is NOT in use, including the line as measured from the lower sheave(s) of the nose supporting the unused device shall be considered part of the load.
4. Load ratings are based on freely suspended loads. No attempt shall be made to move a load horizontally on the ground in any direction.
5. The maximum in-service wind speed is 20 m.p.h. on the boom capacities and 15 m.p.h. on the extension capacities. It is recommended when wind velocity is above 20 m.p.h., rated loads and boom lengths shall be appropriately reduced. For machines not in-service, the main boom should be retracted and lowered with the swing brake set in wind velocities over 30 m.p.h.
6. Rated loads are for lift crane service only.
7. Do not operate at a radius or boom length where capacities are not listed. At these positions, the machine may overturn without any load on the hook.
8. The maximum load which can be telescoped is not definable because of variations in loadings and crane maintenance, but it is safe to attempt retraction and extension of the boom within the limits of the capacity chart.
9. When the boom length or lift radius or both are between values listed, the smallest load shown at either the next larger or shorter radius or next longer or shorter boom length shall be used.
10. For safe operation, the user shall make due allowances for his particular job conditions, such as: soft or uneven ground, out of level conditions, high winds, side loads, pendulum action, jerking or sudden stopping of loads, experience of personnel, two machine (tandem) lifts, traveling with loads, electric wires, obstacles, hazardous conditions, etc. Side pull on boom or extension is extremely dangerous.

NOTES FOR LIFTING CAPACITIES (cont'd.)

OPERATION (cont'd.):

11. When handling personnel, the requirements of the applicable national, state, and local regulations and safety codes must be met.
12. The boom angle before loading should be greater than the loaded boom angle to account for deflection.
13. Capacities appearing above the bold line are based on structural strength and tipping should not be relied upon as a capacity limitation.
14. When operating the machine in the "On Outriggers 50% Extended " mode, the outrigger beam pins must be engaged. When operating in the "On Outriggers 0% Extended " mode, the outrigger beams must be fully retracted. Failure to follow these precautions could result in structural damage or loss of stability of the machine.
15. Do not lift loads when boom is fully lowered. The Load Moment Indicator (LMI) senses pressure and will not provide warnings or lockout. The crane can become overloaded if lift cylinder(s) is fully retracted.
16. Use LMI/angle indicator as reference only.
17. Do not exceed extension capacities at any reduced boom length.
18. Capacities for the 31.7 ft. boom length shall be lifted with boom fully retracted. If boom is not fully retracted, capacities shall not exceed those shown for the 43 ft. boom length.
19. Always pay out load line before extending boom to avoid damaging loadline or crane structure or tripping anti-two-block system.
20. The maximum outrigger pad load is 76,000 lb (for a GVW of 19,760 lb - minimum chassis requirement).
21. Loads lifted must be within safe winch capacity. Multiple part rope reeving must be used on loads exceeding winch single part rated pull. Auxiliary boom head rated for single part use except multi-reeve group used for nominal rated load. Extensions are rated for single part use only.
22. Do not operate the boom over personnel or allow them to walk or stand beneath the boom or load.
23. Do not allow personnel on carrier deck or crane frame area when rotating crane.
24. Do not allow personnel to ride on hook, hook block, load or any device attached to the loadline. Handling of personnel is only permitted with full extension of all outrigger beams. Use only National Crane approved baskets.
25. If using offset extension, do not use personnel basket with extension deployed at 30 degree offset.
26. Operate controls slowly and smoothly to avoid damage to crane or personnel.
27. Boom must be in carrying rack and outriggers fully retracted for travel.
28. Maintain a clearance of at least 10 feet between any part of the crane, loadline, or load, and any electrical line carrying up to 50,000 volts. One foot of clearance is required for every additional 30,000 volts or less.

DEFINITIONS:

1. Operating Radius: Horizontal distance from a projection of the axis of rotation to the supporting surface before loading to the center of the vertical hoist line or tackle with load applied.
2. Loaded Boom Angle (Shown in Parenthesis on Main Boom Capacity Chart): is the angle between the boom base section and the horizontal, after lifting the rated load at the rated radius with the rated boom length.
3. Working Area: Areas measured in a circular arc about the center line of rotation as shown on the working area diagram.
4. Freely Suspended Load: Load hanging free with no direct external force applied except by the lift cable.
5. Side Load: Horizontal force applied to the lifted load either on the ground or in the air.
6. No load stability limit: The stability limit radius is the radius beyond which it is not permitted to position the boom plus block configuration because machine can overturn without any load on the hook.
7. Structural length limit: An area where the boom, or the boom with jib deployed, cannot be extended because of structural limitations.

WEIGHT REDUCTIONS FOR LOAD HANDLING DEVICES

AUXILIARY BOOM NOSE	71 lb
HOOKBLOCKS and HEADACHE BALLS:	
55 ton, 5 sheave (14" sheave) (CE)	1098 lb+
40 ton, 3 sheave (12" sheave)	600 lb+
20 ton, 1 sheave	400 lb+
7 ton overhaul ball	171 lb+

+Refer to rating plate for actual weight.

When lifting over boom extension, deduct total weight of all load handling devices reeved over main boom nose directly from boom extension capacity.

NOTE: All load handling devices and boom attachments are considered part of the load and suitable allowances **MUST BE MADE** for their combined weights. Weights are for Manitowoc furnished equipment.

LINE PULLS AND REEVING INFORMATION

HOISTS	CABLE SPECS.	PERMISSIBLE LINE PULLS	NOMINAL CABLE LENGTH
Main Standard	5/8" (16 mm) Dyform 34 LR Rotation Resistant (Non-rotating) Min. Breaking Strength 56,420 lb	11,280 lb	450 ft.
Main & Aux Optional	5/8" (16 mm) 6x19 Class EEIPS, IWRC Min. Breaking Strength 45,400 lb	11,280 lb	450 ft.

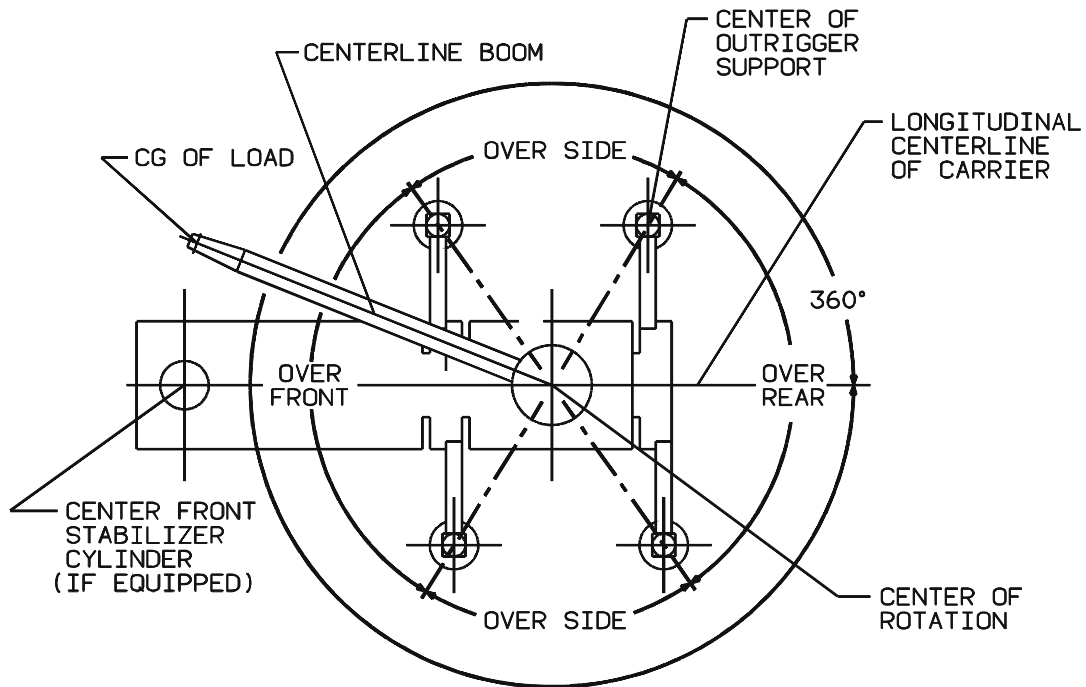
The approximate weight of 5/8" wire rope is 1.0 lb/ft.

Parts of line	1	2	3	4	5	6	7	8	9	10
Max. boom length (ft.) at max. elevation with stated rigging and load block at ground level	173 (includes 45' ext.)	128	102	81	66	55	47	40	35	31.7
Low speed lift (lb)	11280	22500	33750	45000	56250	67500	78750	90000	100000	110000
High speed lift (lb)	5000	10000	15000	20000	25000	30000	35000	40000	45000	50000

HOIST PERFORMANCE

Wire Rope Layer	Hoist Line Pulls		Drum Rope Capacity (ft.)	
	Two Speed Hoist			
	Low	High	Layer	Total
	Available lb*	Available lb*		
1	15,000	7,516	82	82
2	13,529	6,765	92	174
3	12,299	6,150	101	275
4	11,275	5,637	110	385
5	10,407	5,204	119	504

*Max. lifting capacity: Dyform 34 LR and 6x19 class = 11,280 lb



6-829-005671

BOLD LINES DETERMINE THE LIMITING POSITION OF ANY
LOAD FOR OPERATION WITHIN WORKING AREAS INDICATED
WORKING AREA DIAGRAM

Basket LMI Operating Codes

With 6000 lb counterweight:

- 0013 Basket with no stowed extension
- 0014 Basket with 26 ft. fixed or 26-45 ft. tele extension stowed
- 0015 Basket with 26' fixed or 26' tele extension at 0° offset
- 0016 Basket with 26-45 ft. tele extension extended at 0° offset

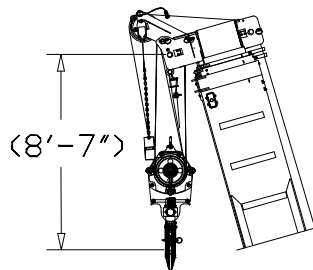
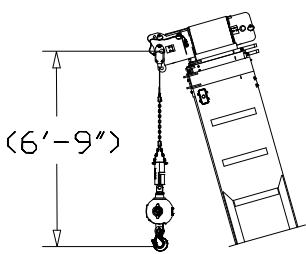
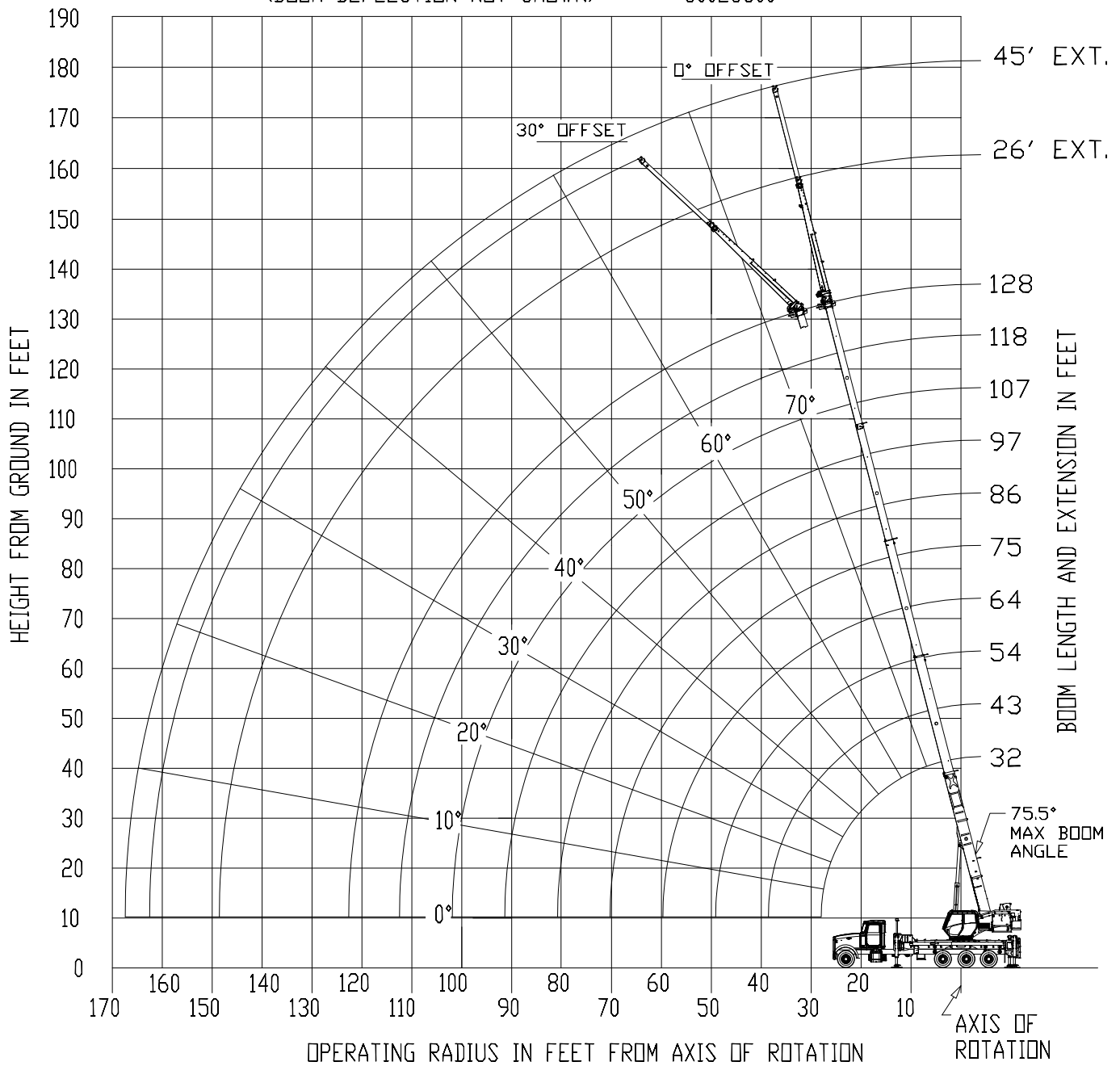
With 3000 lb counterweight:

- 1013 Basket with no stowed extension
- 1014 Basket with 26 ft. fixed or 26-45 ft. tele extension stowed
- 1015 Basket with 26' fixed or 26' tele extension at 0° offset
- 1016 Basket with 26-45 ft. tele extension extended at 0° offset

With no counterweight:

- 8013 Basket with no stowed extension
- 8014 Basket with 26 ft. fixed or 26-45 ft. tele extension stowed
- 8015 Basket with 26' fixed or 26' tele extension at 0° offset
- 8016 Basket with 26-45 ft. tele extension extended at 0° offset

GEOMETRIC RANGE DIAGRAM
 (BOOM DEFLECTION NOT SHOWN) 80025500



DIMENSIONS ARE FOR LARGEST FURNISHED HOOK BLOCK & HEADACHE BALL, WITH ANTI-TWO BLOCK ACTIVATED.

*THIS DRAWING SHOWS THE PHYSICAL REACH OF THE MACHINE. ALWAYS REFER TO LOAD CHART TO SEE WHICH PORTIONS OF THIS DIAGRAM ARE VALID FOR THE SPECIFIC MACHINE CONFIGURATION AND WHERE THE LOADS ARE STRUCTURALLY OR STABILITY LIMITED.

**RATED LIFTING CAPACITIES IN POUNDS WITH 6000 lb COUNTERWEIGHT
31.7 FT. - 128 FT. BOOM**

ON OUTRIGGERS FULLY EXTENDED - 360°

Radius in Feet	#0001									
	Main Boom Length in Feet									
	31.7	43-A	54-B	64-C	75-D	86-E	97-F	107-G	118-H	128
8	110,000 (68.1)									
10	92,300 (64.0)	40,050 (71.3)								
12	81,200 (59.8)	40,050 (68.5)	40,350 (73.3)							
15	65,400 (53.1)	40,050 (64.0)	40,350 (69.9)	40,300 (73.5)						
20	47,750 (40.3)	40,050 (56.2)	40,350 (64.2)	40,300 (68.8)	34,100 (72.5)					
25	31,650 (21.8)	37,700 (47.5)	38,150 (58.0)	37,150 (63.9)	30,100 (68.4)	22,650 (71.5)				
30		30,200 (37.3)	30,700 (51.3)	31,000 (58.6)	27,100 (64.2)	20,400 (68.0)	17,800 (71.2)			
35		22,300 (23.6)	25,100 (43.9)	25,350 (53.1)	24,600 (59.8)	18,500 (64.3)	16,300 (68.0)	14,700 (70.8)	12,900 (73.2)	
40			20,700 (35.2)	21,050 (47.0)	21,350 (55.1)	17,050 (60.5)	15,100 (64.7)	13,650 (68.0)	12,050 (70.8)	10,850 (73.0)
45			*16,400 (24.0)	16,950 (40.3)	17,200 (50.0)	15,800 (56.5)	14,000 (61.5)	12,550 (65.0)	11,300 (68.2)	10,250 (70.8)
50				13,900 (32.4)	14,150 (44.6)	14,400 (52.3)	12,850 (58.0)	11,750 (62.0)	10,650 (65.8)	9,650 (68.4)
55				11,600 (22.2)	11,850 (38.6)	12,050 (47.8)	12,000 (54.4)	10,950 (59.2)	10,000 (63.2)	8,750 (65.9)
60					10,100 (32.4)	10,300 (43.3)	10,450 (50.8)	10,300 (56.0)	9,400 (60.4)	7,850 (63.3)
65					8,550 (23.9)	8,750 (37.9)	8,950 (46.6)	9,100 (52.4)	8,850 (57.5)	7,000 (60.6)
70					*4,650 (9.2)	7,500 (31.8)	7,650 (42.1)	7,800 (48.7)	7,950 (54.3)	6,300 (57.9)
75						6,450 (24.3)	6,600 (37.2)	6,750 (44.7)	6,850 (51.0)	5,700 (55.0)
80						*4,400 (12.8)	5,700 (31.6)	5,800 (40.5)	5,950 (47.5)	5,150 (52.1)
85							4,900 (24.8)	5,000 (35.8)	5,150 (43.8)	4,650 (49.0)
90							*3,850 (15.3)	4,300 (30.4)	4,450 (39.8)	4,150 (45.7)
95								3,700 (24.0)	3,800 (35.4)	3,700 (42.2)
100								*2,800 (14.9)	3,300 (30.5)	3,300 (38.4)
105									2,800 (24.6)	2,850 (34.2)
110									2,350 (16.8)	2,450 (29.5)
115										*1,900 (23.7)
120										*1,100 (15.8)
Minimum boom angle (°) for indicated length (no load)							0	5	8	10
Maximum boom length (ft.) at 0° boom angle (no load)							97			

NOTE: () Boom angles are in degrees.

*Loads are structurally limited.

#LMI operating code. Refer to LMI manual for operating instructions.

Lifting Capacities at Zero Degree Boom Angle										
Boom Angle	Main Boom Length in Feet									
	31.7	43-A	54-B	64-C	75-D	86-E				
0°	12,900 (27.5)	7,600 (38.8)	4,850 (19.8)	3,700 (59.8)	2,200 (70.8)	1,150 (81.8)				

NOTE: () Reference radii in feet.

80034324

**RATED LIFTING CAPACITIES IN POUNDS WITH 6000 lb COUNTERWEIGHT
31.7' - 128' BOOM WITH 26' FIXED or 26-45' TELE EXTENSION STOWED**

ON OUTRIGGERS FULLY EXTENDED - 360°

Radius in Feet	#0002									
	Main Boom Length in Feet									
	31.7	43-A	54-B	64-C	75-D	86-E	97-F	107-G	118-H	128
8	108,850 (68.1)									
10	91,150 (64.0)	39,250 (71.3)								
12	80,050 (59.8)	39,250 (68.5)	39,250 (73.3)							
15	64,250 (53.1)	39,250 (64.0)	39,250 (69.9)	39,250 (73.5)						
20	46,600 (40.3)	39,250 (56.2)	39,250 (64.2)	39,250 (68.8)	33,650 (72.5)					
25	30,500 (21.8)	36,900 (47.5)	37,550 (58.0)	36,650 (63.9)	29,650 (68.4)	22,250 (71.5)				
30		29,400 (37.3)	30,100 (51.3)	30,500 (58.6)	26,650 (64.2)	20,000 (68.0)	17,450 (71.2)			
35		21,500 (23.6)	24,500 (43.9)	24,850 (53.1)	24,150 (59.8)	18,100 (64.3)	15,950 (68.0)	14,400 (70.8)	12,600 (73.2)	
40			20,100 (35.2)	20,550 (47.0)	20,900 (55.1)	16,650 (60.5)	14,750 (64.7)	13,350 (68.0)	11,750 (70.8)	10,600 (73.0)
45			15,800 (24.0)	16,450 (40.3)	16,750 (50.0)	15,400 (56.5)	13,650 (61.5)	12,250 (65.0)	11,000 (68.2)	10,000 (70.8)
50				13,400 (32.4)	13,700 (44.6)	14,000 (52.3)	12,500 (58.0)	11,450 (62.0)	10,350 (65.8)	9,400 (68.4)
55				11,100 (22.2)	11,400 (38.6)	11,650 (47.8)	11,650 (54.4)	10,650 (59.2)	9,700 (63.2)	8,500 (65.9)
60					9,650 (32.4)	9,900 (43.3)	10,100 (50.8)	10,000 (56.0)	9,100 (60.4)	7,600 (63.3)
65					8,100 (23.9)	8,350 (37.9)	8,600 (46.6)	8,800 (52.4)	8,550 (57.5)	6,750 (60.6)
70					*4,200 (9.2)	7,100 (31.8)	7,300 (42.1)	7,500 (48.7)	7,650 (54.3)	6,050 (57.9)
75						6,050 (24.3)	6,250 (37.2)	6,450 (44.7)	6,550 (51.0)	5,450 (55.0)
80						*4,000 (12.8)	5,350 (31.6)	5,500 (40.5)	5,650 (47.5)	4,900 (52.1)
85							4,550 (24.8)	4,700 (35.8)	4,850 (43.8)	4,400 (49.0)
90							*3,500 (15.3)	4,000 (30.4)	4,150 (39.8)	3,900 (45.7)
95								3,400 (24.0)	3,500 (35.4)	3,450 (42.2)
100								*2,500 (14.9)	3,000 (30.5)	3,050 (38.4)
105									2,500 (24.6)	2,600 (34.2)
110									2,050 (16.8)	2,200 (29.5)
115										*1,650 (23.7)
120										*850 (15.8)
Minimum boom angle (°) for indicated length (no load)							0	5	8	10
Maximum boom length (ft.) at 0° boom angle (no load)							97			

NOTE: () Boom angles are in degrees.

*Loads are structurally limited.

#LMI operating code. Refer to LMI manual for operating instructions.

Lifting Capacities at Zero Degree Boom Angle										
Boom Angle	Main Boom Length in Feet									
	31.7	43-A	54-B	64-C	75-D	86-E				
0°	11,750 (27.5)	6,800 (38.8)	4,250 (19.8)	3,200 (59.8)	1,750 (70.8)	750 (81.8)				

NOTE: () Reference radii in feet.

80034325

**RATED LIFTING CAPACITIES IN POUNDS WITH 6000 lb COUNTERWEIGHT
31.7' - 128' BOOM WITH 26' FIXED ERECTED or 26-45' EXT ERECTED, RETRACTED**

ON OUTRIGGERS FULLY EXTENDED - 360°

Radius in Feet	#0017									
	Main Boom Length in Feet									
	31.7	43-A	54-B	64-C	75-D	86-E	97-F	107-G	118-H	128
8	107,450 (68.1)									
10	89,750 (64.0)	37,700 (71.3)								
12	78,650 (59.8)	37,700 (68.5)	37,700 (73.3)							
15	62,850 (53.1)	37,700 (64.0)	37,700 (69.9)	37,700 (73.5)						
20	45,200 (40.3)	37,700 (56.2)	37,700 (64.2)	37,700 (68.8)	32,000 (72.5)					
25	29,100 (21.8)	35,350 (47.5)	35,900 (58.0)	35,000 (63.9)	28,000 (68.4)	20,550 (71.5)				
30		27,850 (37.3)	28,450 (51.3)	28,850 (58.6)	25,000 (64.2)	18,300 (68.0)	15,750 (71.2)			
35		19,950 (23.6)	22,850 (43.9)	23,200 (53.1)	22,500 (59.8)	16,400 (64.3)	14,250 (68.0)	12,650 (70.8)	10,900 (73.2)	
40			18,450 (35.2)	18,900 (47.0)	19,250 (55.1)	14,950 (60.5)	13,050 (64.7)	11,600 (68.0)	10,050 (70.8)	8,850 (73.0)
45			*14,150 (24.0)	14,800 (40.3)	15,100 (50.0)	13,700 (56.5)	11,950 (61.5)	10,500 (65.0)	9,300 (68.2)	8,250 (70.8)
50				11,750 (32.4)	12,050 (44.6)	12,300 (52.3)	10,800 (58.0)	9,700 (62.0)	8,650 (65.8)	7,650 (68.4)
55				9,450 (22.2)	9,750 (38.6)	9,950 (47.8)	9,950 (54.4)	8,900 (59.2)	8,000 (63.2)	6,750 (65.9)
60					8,000 (32.4)	8,200 (43.3)	8,400 (50.8)	8,250 (56.0)	7,400 (60.4)	5,850 (63.3)
65					6,450 (23.9)	6,650 (37.9)	6,900 (46.6)	7,050 (52.4)	6,850 (57.5)	5,000 (60.6)
70					*2,550 (9.2)	5,400 (31.8)	5,600 (42.1)	5,750 (48.7)	5,950 (54.3)	4,300 (57.9)
75						4,350 (24.3)	4,550 (37.2)	4,700 (44.7)	4,850 (51.0)	3,700 (55.0)
80						*2,300 (12.8)	3,650 (31.6)	3,750 (40.5)	3,950 (47.5)	3,150 (52.1)
85							2,850 (24.8)	2,950 (35.8)	3,150 (43.8)	2,650 (49.0)
90							*1,800 (15.3)	2,250 (30.4)	2,450 (39.8)	2,150 (45.7)
95								1,650 (24.0)	1,800 (35.4)	1,700 (42.2)
100								*750 (14.9)	1,300 (30.5)	1,300 (38.4)
105									800 (24.6)	850 (34.2)
110										450 (29.5)
Minimum boom angle (°) for indicated length (no load)				0	2	5	7	11	19	29
Maximum boom length (ft.) at 0° boom angle (no load)				64						

NOTE: () Boom angles are in degrees.

*Loads are structurally limited.

#LMI operating code. Refer to LMI manual for operating instructions.

Lifting Capacities at Zero Degree Boom Angle									
Boom Angle	Main Boom Length in Feet								
	31.7	43-A	54-B	64-C					
0°	10,350 (27.5)	5,250 (38.8)	2,600 (19.8)	1,550 (59.8)					

NOTE: () Reference radii in feet.

80034326

**RATED LIFTING CAPACITIES IN POUNDS WITH 6000 lb COUNTERWEIGHT
31.7' - 128' BOOM WITH 26-45' EXT ERECTED, EXTENDED**

ON OUTRIGGERS FULLY EXTENDED - 360°

Radius in Feet	#0018									
	Main Boom Length in Feet									
	31.7	43-A	54-B	64-C	75-D	86-E	97-F	107-G	118-H	128
8	107,050 (68.1)									
10	89,350 (64.0)	37,400 (71.3)								
12	78,250 (59.8)	37,400 (68.5)	37,400 (73.3)							
15	62,450 (53.1)	37,400 (64.0)	37,400 (69.9)	37,400 (73.5)						
20	44,800 (40.3)	37,400 (56.2)	37,400 (64.2)	37,400 (68.8)	31,850 (72.5)					
25	28,700 (21.8)	35,050 (47.5)	35,700 (58.0)	34,800 (63.9)	27,850 (68.4)	20,450 (71.5)				
30		27,550 (37.3)	28,250 (51.3)	28,650 (58.6)	24,850 (64.2)	18,200 (68.0)	15,650 (71.2)			
35		19,650 (23.6)	22,650 (43.9)	23,000 (53.1)	22,350 (59.8)	16,300 (64.3)	14,150 (68.0)	12,550 (70.8)	10,800 (73.2)	
40			18,250 (35.2)	18,700 (47.0)	19,100 (55.1)	14,850 (60.5)	12,950 (64.7)	11,500 (68.0)	9,950 (70.8)	8,750 (73.0)
45			*13,950 (24.0)	14,600 (40.3)	14,950 (50.0)	13,600 (56.5)	11,850 (61.5)	10,400 (65.0)	9,200 (68.2)	8,150 (70.8)
50				11,550 (32.4)	11,900 (44.6)	12,200 (52.3)	10,700 (58.0)	9,600 (62.0)	8,550 (65.8)	7,550 (68.4)
55				9,250 (22.2)	9,600 (38.6)	9,850 (47.8)	9,850 (54.4)	8,800 (59.2)	7,900 (63.2)	6,650 (65.9)
60					7,850 (32.4)	8,100 (43.3)	8,300 (50.8)	8,150 (56.0)	7,300 (60.4)	5,750 (63.3)
65					6,300 (23.9)	6,550 (37.9)	6,800 (46.6)	6,950 (52.4)	6,750 (57.5)	4,900 (60.6)
70					*2,400 (9.2)	5,300 (31.8)	5,500 (42.1)	5,650 (48.7)	5,850 (54.3)	4,200 (57.9)
75						4,250 (24.3)	4,450 (37.2)	4,600 (44.7)	4,750 (51.0)	3,600 (55.0)
80							*2,200 (12.8)	3,550 (31.6)	3,650 (40.5)	3,850 (47.5)
85								2,750 (24.8)	2,850 (35.8)	3,050 (43.8)
90								*1,700 (15.3)	2,150 (30.4)	2,350 (39.8)
95									1,550 (24.0)	1,700 (35.4)
100									*650 (14.9)	1,200 (30.5)
105										700 (24.6)
										750 (34.2)
Minimum boom angle (°) for indicated length (no load)				0	3	6	10	14	20	30
Maximum boom length (ft.) at 0° boom angle (no load)				64						

NOTE: () Boom angles are in degrees.

*Loads are structurally limited.

#LMI operating code. Refer to LMI manual for operating instructions.

Lifting Capacities at Zero Degree Boom Angle										
Boom Angle	Main Boom Length in Feet									
	31.7	43-A	54-B	64-C						
0°	9,950 (27.5)	4,950 (38.8)	2,400 (19.8)	1,350 (59.8)						

NOTE: () Reference radii in feet.

80034327

**RATED LIFTING CAPACITIES IN POUNDS WITH 6000 lb COUNTERWEIGHT
31.7 FT. - 128 FT. BOOM**

ON OUTRIGGERS FULLY EXTENDED - OVER REAR

Radius in Feet	#0003									
	Main Boom Length in Feet									
	31.7	43-A	54-B	64-C	75-D	86-E	97-F	107-G	118-H	128
8	110,000 (68.1)									
10	92,300 (64.0)	40,050 (71.3)								
12	81,200 (59.8)	40,050 (68.5)	40,350 (73.3)							
15	65,400 (53.1)	40,050 (64.0)	40,350 (69.9)	40,300 (73.5)						
20	47,750 (40.3)	40,050 (56.2)	40,350 (64.2)	40,300 (68.8)	34,100 (72.5)					
25	31,650 (21.8)	37,700 (47.5)	38,150 (58.0)	37,150 (63.6)	30,100 (68.4)	22,650 (71.5)				
30		30,200 (37.3)	30,700 (51.3)	31,000 (58.3)	27,100 (64.2)	20,400 (67.8)	17,800 (71.2)			
35		22,300 (23.6)	25,100 (43.9)	25,350 (52.7)	24,600 (59.8)	18,500 (64.0)	16,300 (68.0)	14,700 (70.8)	12,900 (73.2)	
40			20,950 (35.2)	21,250 (47.3)	21,500 (55.1)	17,050 (60.4)	15,100 (64.8)	13,650 (68.0)	12,050 (70.8)	10,850 (73.0)
45			16,400 (24.0)	18,000 (40.7)	18,250 (50.1)	15,800 (56.4)	14,000 (61.5)	12,550 (65.0)	11,300 (68.2)	10,250 (70.8)
50				15,250 (33.0)	15,500 (44.7)	14,600 (52.1)	12,850 (58.0)	11,750 (62.0)	10,650 (65.8)	9,650 (68.4)
55				*11,900 (23.2)	13,100 (38.7)	13,300 (47.6)	12,000 (54.4)	10,950 (59.2)	10,000 (63.2)	8,750 (65.9)
60					11,200 (32.5)	11,400 (42.8)	11,250 (50.5)	10,300 (56.0)	9,400 (60.4)	7,850 (63.3)
65					9,700 (23.9)	9,900 (37.4)	10,100 (46.8)	9,700 (52.6)	8,850 (57.5)	7,000 (60.6)
70					*4,650 (9.2)	8,600 (31.3)	8,750 (42.3)	8,900 (48.9)	8,400 (54.5)	6,300 (57.9)
75						7,450 (23.8)	7,600 (37.3)	7,750 (45.0)	7,900 (51.3)	5,700 (55.0)
80						*4,400 (12.6)	6,650 (31.7)	6,800 (40.7)	6,900 (47.8)	5,150 (52.1)
85							5,800 (25.0)	5,950 (36.0)	6,050 (44.1)	4,650 (49.0)
90							*3,850 (15.3)	5,200 (30.7)	5,300 (40.1)	4,150 (45.7)
95								4,550 (24.2)	4,650 (35.7)	3,700 (42.2)
100								*2,800 (14.9)	4,050 (30.8)	3,300 (38.4)
105									3,550 (24.9)	3,000 (34.3)
110									*2,400 (16.8)	2,650 (29.6)
115										1,900 (23.7)
120										1,100 (15.8)
Minimum boom angle (°) for indicated length (no load)							0	5	8	10
Maximum boom length (ft.) at 0° boom angle (no load)							97			

NOTE: () Boom angles are in degrees.

*Loads are structurally limited.

#LMI operating code. Refer to LMI manual for operating instructions.

Lifting Capacities at Zero Degree Boom Angle										
Boom Angle	Main Boom Length in Feet									
	31.7	43-A	54-B	64-C	75-D	86-E				
0°	12,900 (27.5)	7,600 (38.8)	4,850 (19.8)	3,700 (59.8)	2,200 (70.8)	1,150 (81.8)				

NOTE: () Reference radii in feet.

80034328

**RATED LIFTING CAPACITIES IN POUNDS WITH 6000 lb COUNTERWEIGHT
31.7' - 128' BOOM WITH 26' FIXED or 26-45' TELE EXTENSION STOWED**

ON OUTRIGGERS FULLY EXTENDED - OVER REAR

Radius in Feet	#0004									
	Main Boom Length in Feet									
	31.7	43-A	54-B	64-C	75-D	86-E	97-F	107-G	118-H	128
8	108,850 (68.1)									
10	91,150 (64.0)	39,250 (71.3)								
12	80,050 (59.8)	39,250 (68.5)	39,250 (73.3)							
15	64,250 (53.1)	39,250 (64.0)	39,250 (69.9)	39,250 (73.5)						
20	46,600 (40.3)	39,250 (56.2)	39,250 (64.2)	39,250 (68.8)	33,650 (72.5)					
25	30,500 (21.8)	36,900 (47.5)	37,550 (58.0)	36,650 (63.9)	29,650 (68.4)	22,250 (71.5)				
30		29,400 (37.3)	30,100 (51.3)	30,500 (58.6)	26,650 (64.2)	20,000 (68.0)	17,450 (71.2)			
35		21,500 (23.6)	24,500 (43.9)	24,850 (53.1)	24,150 (59.8)	18,100 (64.3)	15,950 (68.0)	14,400 (70.8)	12,600 (73.2)	
40			20,350 (35.2)	20,750 (47.0)	21,050 (55.1)	16,650 (60.5)	14,750 (64.8)	13,350 (68.0)	11,750 (70.8)	10,600 (73.0)
45			15,800 (24.0)	17,500 (40.3)	17,800 (50.1)	15,400 (56.5)	13,650 (61.5)	12,250 (65.0)	11,000 (68.2)	10,000 (70.8)
50				14,750 (32.4)	15,050 (44.7)	14,200 (52.1)	12,500 (58.0)	11,450 (62.0)	10,350 (65.8)	9,400 (68.4)
55				*11,400 (22.2)	12,650 (38.7)	12,900 (47.6)	11,650 (54.4)	10,650 (59.2)	9,700 (63.2)	8,500 (65.9)
60					10,750 (32.5)	11,000 (42.8)	10,900 (50.5)	10,000 (56.0)	9,100 (60.4)	7,600 (63.3)
65					9,250 (23.9)	9,500 (37.4)	9,750 (46.8)	9,400 (52.6)	8,550 (57.5)	6,750 (60.6)
70					*4,200 (9.2)	8,200 (31.3)	8,400 (42.3)	8,600 (48.9)	8,100 (54.5)	6,050 (57.9)
75						7,050 (23.8)	7,250 (37.3)	7,450 (45.0)	7,600 (51.3)	5,450 (55.0)
80						*4,000 (12.6)	6,300 (31.7)	6,500 (40.7)	6,600 (47.8)	4,900 (52.1)
85							5,450 (25.0)	5,650 (36.0)	5,750 (44.1)	4,400 (49.0)
90							*3,500 (15.3)	4,900 (30.7)	5,000 (40.1)	3,900 (45.7)
95								4,250 (24.2)	4,350 (35.7)	3,450 (42.2)
100								*2,500 (14.9)	3,750 (30.8)	3,050 (38.4)
105									3,250 (24.9)	2,750 (34.3)
110									*2,100 (16.8)	2,400 (29.6)
115										1,650 (23.7)
120										850 (15.8)
Minimum boom angle (°) for indicated length (no load)							0	5	8	10
Maximum boom length (ft.) at 0° boom angle (no load)							97			

NOTE: () Boom angles are in degrees.

*Loads are structurally limited.

#LMI operating code. Refer to LMI manual for operating instructions.

Lifting Capacities at Zero Degree Boom Angle										
Boom Angle	Main Boom Length in Feet									
	31.7	43-A	54-B	64-C	75-D	86-E				
0°	11,750 (27.5)	6,800 (38.8)	4,250 (19.8)	3,200 (59.8)	1,750 (70.8)	750 (81.8)				

NOTE: () Reference radii in feet.

80034329

**26 FT. FIXED AND 26 FT. - 45 FT. TELE OFFSETTABLE BOOM EXTENSION
WITH 6000 lb COUNTERWEIGHT**

ON OUTRIGGERS FULLY EXTENDED - 360°

Radius in Feet	**26 ft. LENGTH		45 ft. LENGTH	
	#0005	#0007	#0009	#0011
	0° OFFSET	30° OFFSET	0° OFFSET	30° OFFSET
50	6,000 (72.6)			
55	5,800 (70.8)			
60	5,500 (69.0)			
65	5,200 (67.0)	4,900 (72.1)	4,050 (70.4)	
70	4,850 (65.0)	4,650 (69.9)	4,000 (68.8)	
75	4,500 (62.9)	4,400 (67.7)	3,950 (67.2)	2,800 (73.8)
80	4,250 (60.8)	4,150 (65.4)	3,900 (65.6)	2,700 (71.9)
85	3,950 (58.6)	4,000 (63.1)	3,800 (63.9)	2,650 (70.0)
90	3,800 (56.4)	3,800 (60.7)	3,550 (62.0)	2,600 (68.0)
95	3,650 (54.1)	3,650 (58.3)	3,250 (59.9)	2,550 (66.0)
100	3,150 (51.5)	3,350 (55.6)	3,000 (57.8)	2,500 (63.9)
105	2,600 (48.6)	2,900 (52.6)	2,700 (55.6)	2,450 (61.8)
110	2,100 (45.7)	2,550 (49.6)	2,500 (53.5)	2,400 (59.5)
115	1,700 (42.6)	2,100 (46.3)	2,300 (51.2)	2,350 (57.2)
120	1,350 (39.4)	*1,650 (42.8)	2,050 (48.7)	2,300 (54.7)
125	950 (35.9)	*1,200 (39.0)	1,750 (46.1)	2,250 (52.1)
130	650 (32.1)	*850 (34.8)	1,500 (43.4)	2,000 (49.1)
135		*450 (30.0)	1,200 (40.4)	1,600 (45.7)
140			900 (37.3)	1,250 (42.2)
145			650 (33.9)	*900 (38.3)
150				*600 (33.9)
Min. boom angle for indicated length (no load)	29°	30°	30°	31°
Max. boom length at 0° boom angle (no load)	64 ft.		64 ft.	

NOTE: () Boom angles are in degrees.

80034336

#LMI operating code. Refer to LMI manual for instructions.

*Loads are structurally limited.

**26 ft. capacities are applicable to both 26' fixed and 26' tele extension.

BOOM EXTENSION CAPACITY

NOTES:

1. All capacities above the bold line are based on structural strength limitations.
 2. 26 ft. and 45 ft. extension lengths may be used for single line lifting service.
 3. Radii listed are for a fully extended boom with the boom extension erected. For main boom lengths less than fully extended, the rated loads are determined by boom angle. Use only the column which corresponds to the boom extension length and offset for which the machine is configured. For boom angles not shown, use the rating of the next lower boom angle.
- WARNING:** Operation of this machine with heavier loads than the capacities listed is strictly prohibited. Machine tipping with boom extension occurs rapidly and without advance warning.
4. Boom angle is the angle above or below horizontal of the longitudinal axis of the boom base section after lifting rated load.
 5. Capacities listed are with outriggers properly extended and vertical jacks set only.

**26 FT. FIXED AND 26 FT. - 45 FT. TELE OFFSETTABLE BOOM EXTENSION
WITH 6000 lb COUNTERWEIGHT**

ON OUTRIGGERS FULLY EXTENDED - OVER REAR

Radius in Feet	**26 ft. LENGTH		45 ft. LENGTH	
	#0006	#0008	#0010	#0012
	0° OFFSET	30° OFFSET	0° OFFSET	30° OFFSET
50	6,000 (72.6)			
55	5,800 (70.8)			
60	5,500 (69.0)			
65	5,200 (67.0)	4,900 (72.1)	4,050 (70.4)	
70	4,850 (65.0)	4,650 (69.9)	4,000 (68.8)	
75	4,500 (62.9)	4,400 (67.7)	3,950 (67.2)	2,800 (73.8)
80	4,250 (60.8)	4,150 (65.4)	3,900 (65.6)	2,700 (71.9)
85	3,950 (58.6)	4,000 (63.1)	3,800 (63.9)	2,650 (70.0)
90	3,800 (56.4)	3,800 (60.7)	3,550 (62.0)	2,600 (68.0)
95	3,650 (54.1)	3,650 (58.3)	3,250 (59.9)	2,550 (66.0)
100	3,150 (51.5)	3,350 (55.6)	3,000 (57.8)	2,500 (63.9)
105	2,600 (48.6)	2,900 (52.6)	2,700 (55.6)	2,450 (61.8)
110	2,100 (45.7)	2,550 (49.6)	2,500 (53.5)	2,400 (59.5)
115	1,700 (42.6)	2,150 (46.3)	2,300 (51.2)	2,350 (57.2)
120	1,350 (39.4)	1,650 (42.8)	2,050 (48.7)	2,300 (54.7)
125	950 (35.9)	1,200 (39.0)	1,750 (46.1)	2,250 (52.1)
130	650 (32.1)	850 (34.8)	1,500 (43.4)	2,200 (49.3)
135		450 (30.0)	1,200 (40.4)	1,750 (45.9)
140			900 (37.3)	1,350 (42.3)
145			650 (33.9)	900 (38.3)
150				600 (33.9)
Min. boom angle for indicated length (no load)	29°	30°	30°	31°
Max. boom length at 0° boom angle (no load)	64 ft.		64 ft.	

NOTE: () Boom angles are in degrees. 80034337

#LMI operating code. Refer to LMI manual for instructions.

**26 ft. capacities are applicable to both 26' fixed and 26' tele extension.

BOOM EXTENSION CAPACITY NOTES:

1. All capacities above the bold line are based on structural strength limitations
 2. 26 ft. and 45 ft. extension lengths may be used for single line lifting service.
 3. Radii listed are for a fully extended boom with the boom extension erected. For main boom lengths less than fully extended, the rated loads are determined by boom angle. Use only the column which corresponds to the boom extension length and offset for which the machine is configured. For boom angles not shown, use the rating of the next lower boom angle.
- WARNING:** Operation of this machine with heavier loads than the capacities listed is strictly prohibited. Machine tipping with boom extension occurs rapidly and without advance warning.
4. Boom angle is the angle above or below horizontal of the longitudinal axis of the boom base section after lifting rated load.
 5. Capacities listed are with outriggers properly extended and vertical jacks set only.

**RATED LIFTING CAPACITIES IN POUNDS WITH 6000 lb COUNTERWEIGHT
31.7 FT. - 128 FT. BOOM
ON OUTRIGGERS 50% EXTENDED - 360°**

Radius in Feet	#0401									
	Main Boom Length in Feet									
	31.7	43-A	54-B	64-C	75-D	86-E	97-F	107-G	118-H	128
8	110,000 (68.1)									
10	92,300 (64.0)	40,050 (71.3)								
12	81,200 (59.8)	40,050 (68.5)	40,350 (73.3)							
15	64,000 (53.1)	40,050 (64.0)	40,350 (69.9)	40,300 (73.5)						
20	34,600 (40.2)	35,700 (56.2)	36,350 (64.1)	36,800 (68.8)	34,100 (72.5)					
25	22,250 (21.8)	23,350 (47.5)	23,900 (57.8)	24,300 (63.6)	24,600 (68.2)	22,650 (71.5)				
30		16,550 (37.3)	17,100 (51.1)	17,350 (58.3)	17,650 (63.8)	17,900 (67.8)	17,800 (71.2)			
35		12,250 (23.6)	12,750 (43.7)	13,050 (52.7)	13,300 (59.3)	13,550 (64.0)	13,600 (67.8)	13,700 (70.7)	12,900 (73.2)	
40			9,750 (36.0)	10,050 (47.3)	10,300 (55.1)	10,500 (60.4)	10,600 (64.7)	10,700 (67.8)	10,800 (70.8)	10,850 (73.0)
45			7,700 (25.2)	8,000 (40.7)	8,200 (50.1)	8,300 (56.4)	8,400 (61.2)	8,500 (64.7)	8,600 (67.9)	8,700 (70.4)
50				6,300 (33.0)	6,500 (44.8)	6,700 (52.1)	6,850 (57.6)	7,000 (61.5)	7,100 (65.1)	7,200 (67.8)
55				4,950 (23.2)	5,200 (38.8)	5,350 (47.6)	5,500 (53.9)	5,600 (58.2)	5,750 (62.2)	5,850 (65.1)
60					4,100 (32.0)	4,250 (42.8)	4,400 (49.9)	4,500 (54.8)	4,650 (59.2)	4,750 (62.4)
65					3,200 (23.5)	3,350 (37.4)	3,500 (45.8)	3,600 (51.3)	3,700 (56.1)	3,800 (59.6)
70					2,400 (9.1)	2,600 (31.3)	2,750 (41.3)	2,850 (47.6)	2,950 (52.9)	3,000 (56.7)
75						1,950 (23.8)	2,100 (36.4)	2,200 (43.7)	2,250 (49.6)	2,350 (53.8)
80						1,400 (12.6)	1,550 (30.9)	1,600 (39.5)	1,700 (46.2)	1,800 (50.8)
85							1,050 (24.2)	1,150 (34.8)	1,200 (42.5)	1,250 (47.6)
90							600 (14.7)	700 (29.5)	800 (38.5)	850 (44.3)
95									400 (34.2)	450 (40.8)
Minimum boom angle (°) for indicated length (no load)						0	9	24	34	40
Maximum boom length (ft.) at 0° boom angle (no load)						86				

NOTE: () Boom angles are in degrees.

#LMI operating code. Refer to LMI manual for operating instructions.

Lifting Capacities at Zero Degree Boom Angle										
Boom Angle	Main Boom Length in Feet									
	31.7	43-A	54-B	64-C	75-D	86-E				
0°	12,900 (27.5)	7,600 (38.8)	4,850 (19.8)	3,700 (59.8)	2,200 (70.8)	1,150 (81.8)				

NOTE: () Reference radii in feet.

80034330

**RATED LIFTING CAPACITIES IN POUNDS WITH 6000 lb COUNTERWEIGHT
31.7' - 128' BOOM WITH 26' FIXED or 26-45' TELE EXTENSION STOWED
ON OUTRIGGERS 50% EXTENDED - 360°**

Radius in Feet	#0402									
	Main Boom Length in Feet									
	31.7	43-A	54-B	64-C	75-D	86-E	97-F	107-G	118-H	128
8	108,850 (68.1)									
10	91,150 (64.0)	39,250 (71.3)								
12	80,050 (59.8)	39,250 (68.5)	39,250 (73.3)							
15	62,850 (53.1)	39,250 (64.0)	39,250 (69.9)	39,250 (73.5)						
20	33,450 (40.2)	34,900 (56.2)	35,750 (64.1)	36,300 (68.8)	33,650 (72.5)					
25	21,100 (21.8)	22,550 (47.5)	23,300 (57.8)	23,800 (63.6)	24,150 (68.2)	22,250 (71.5)				
30		15,750 (37.3)	16,500 (51.1)	16,850 (58.3)	17,200 (63.8)	17,500 (67.8)	17,450 (71.2)			
35		11,450 (23.6)	12,150 (43.7)	12,550 (52.7)	12,850 (59.3)	13,150 (64.0)	13,250 (67.8)	13,400 (70.7)	12,600 (73.2)	
40			9,150 (36.0)	9,550 (47.3)	9,850 (55.1)	10,100 (60.4)	10,250 (64.7)	10,400 (67.8)	10,500 (70.8)	10,600 (73.0)
45			7,100 (25.2)	7,500 (40.7)	7,750 (50.1)	7,900 (56.4)	8,050 (61.2)	8,200 (64.7)	8,300 (67.9)	8,450 (70.4)
50				5,800 (33.0)	6,050 (44.8)	6,300 (52.1)	6,500 (57.6)	6,700 (61.5)	6,800 (65.1)	6,950 (67.8)
55				4,450 (23.2)	4,750 (38.8)	4,950 (47.6)	5,150 (53.9)	5,300 (58.2)	5,450 (62.2)	5,600 (65.1)
60					3,650 (32.0)	3,850 (42.8)	4,050 (49.9)	4,200 (54.8)	4,350 (59.2)	4,500 (62.4)
65					2,750 (23.5)	2,950 (37.4)	3,150 (45.8)	3,300 (51.3)	3,400 (56.1)	3,550 (59.6)
70					1,950 (9.1)	2,200 (31.3)	2,400 (41.3)	2,550 (47.6)	2,650 (52.9)	2,750 (56.7)
75						1,550 (23.8)	1,750 (36.4)	1,900 (43.7)	1,950 (49.6)	2,100 (53.8)
80						1,000 (12.6)	1,200 (30.9)	1,300 (39.5)	1,400 (46.2)	1,550 (50.8)
85							700 (24.2)	850 (34.8)	900 (42.5)	1,000 (47.6)
90								400 (29.5)	500 (38.5)	600 (44.3)
Minimum boom angle (°) for indicated length (no load)					0	9	24	34	40	
Maximum boom length (ft.) at 0° boom angle (no load)					86					

NOTE: () Boom angles are in degrees.

#LMI operating code. Refer to LMI manual for operating instructions.

Lifting Capacities at Zero Degree Boom Angle										
Boom Angle	Main Boom Length in Feet									
	31.7	43-A	54-B	64-C	75-D	86-E				
0°	11,750 (27.5)	6,800 (38.8)	4,250 (19.8)	3,200 (59.8)	1,750 (70.8)	750 (81.8)				

NOTE: () Reference radii in feet.

80034331

**RATED LIFTING CAPACITIES IN POUNDS WITH 6000 lb COUNTERWEIGHT
31.7' - 128' BOOM WITH 26' FIXED ERECTED or 26-45' EXT ERECTED, RETRACTED
ON OUTRIGGERS 50% EXTENDED - 360°**

Radius in Feet	#0417									
	Main Boom Length in Feet									
	31.7	43-A	54-B	64-C	75-D	86-E	97-F	107-G	118-H	128
8	107,450 (68.1)									
10	89,750 (64.0)	37,700 (71.3)								
12	78,650 (59.8)	37,700 (68.5)	37,700 (73.3)							
15	61,450 (53.1)	37,700 (64.0)	37,700 (69.9)	37,700 (73.5)						
20	32,050 (40.2)	33,350 (56.2)	34,100 (64.1)	34,650 (68.8)	32,000 (72.5)					
25	19,700 (21.8)	21,000 (47.5)	21,650 (57.8)	22,150 (63.6)	22,500 (68.2)	20,550 (71.5)				
30		14,200 (37.3)	14,850 (51.1)	15,200 (58.3)	15,550 (63.8)	15,800 (67.8)	15,750 (71.2)			
35		9,900 (23.6)	10,500 (43.7)	10,900 (52.7)	11,200 (59.3)	11,450 (64.0)	11,550 (67.8)	11,650 (70.7)	10,900 (73.2)	
40			7,500 (36.0)	7,900 (47.3)	8,200 (55.1)	8,400 (60.4)	8,550 (64.7)	8,650 (67.8)	8,800 (70.8)	8,850 (73.0)
45			5,450 (25.2)	5,850 (40.7)	6,100 (50.1)	6,200 (56.4)	6,350 (61.2)	6,450 (64.7)	6,600 (67.9)	6,700 (70.4)
50				4,150 (33.0)	4,400 (44.8)	4,600 (52.1)	4,800 (57.6)	4,950 (61.5)	5,100 (65.1)	5,200 (67.8)
55				2,800 (23.2)	3,100 (38.8)	3,250 (47.6)	3,450 (53.9)	3,550 (58.2)	3,750 (62.2)	3,850 (65.1)
60					2,000 (32.0)	2,150 (42.8)	2,350 (49.9)	2,450 (54.8)	2,650 (59.2)	2,750 (62.4)
65					1,100 (23.5)	1,250 (37.4)	1,450 (45.8)	1,550 (51.3)	1,700 (56.1)	1,800 (59.6)
70						500 (31.3)	700 (41.3)	800 (47.6)	950 (52.9)	1,000 (56.7)
Minimum boom angle (°) for indicated length (no load)				0	16	31	40	46	51	54
Maximum boom length (ft.) at 0° boom angle (no load)				64						

NOTE: () Boom angles are in degrees.

#LMI operating code. Refer to LMI manual for operating instructions.

Lifting Capacities at Zero Degree Boom Angle										
Boom Angle	Main Boom Length in Feet									
	31.7	43-A	54-B	64-C						
0°	10,350 (27.5)	5,250 (38.8)	2,600 (19.8)	1,550 (59.8)						

NOTE: () Reference radii in feet.

80034332

**RATED LIFTING CAPACITIES IN POUNDS WITH 6000 lb COUNTERWEIGHT
31.7' - 128' BOOM WITH 26-45' EXT ERECTED, EXTENDED
ON OUTRIGGERS 50% EXTENDED - 360°**

Radius in Feet	#0418									
	Main Boom Length in Feet									
	31.7	43-A	54-B	64-C	75-D	86-E	97-F	107-G	118-H	128
8	107,050 (68.1)									
10	89,350 (64.0)	37,400 (71.3)								
12	78,250 (59.8)	37,400 (68.5)	37,400 (73.3)							
15	61,050 (53.1)	37,400 (64.0)	37,400 (69.9)	37,400 (73.5)						
20	31,650 (40.2)	33,050 (56.2)	33,900 (64.1)	34,450 (68.8)	31,850 (72.5)					
25	19,300 (21.8)	20,700 (47.5)	21,450 (57.8)	21,950 (63.6)	22,350 (68.2)	20,450 (71.5)				
30		13,900 (37.3)	14,650 (51.1)	15,000 (58.3)	15,400 (63.8)	15,700 (67.8)	15,650 (71.2)			
35		9,600 (23.6)	10,300 (43.7)	10,700 (52.7)	11,050 (59.3)	11,350 (64.0)	11,450 (67.8)	11,550 (70.7)	10,800 (73.2)	
40			7,300 (36.0)	7,700 (47.3)	8,050 (55.1)	8,300 (60.4)	8,450 (64.7)	8,550 (67.8)	8,700 (70.8)	8,750 (73.0)
45			5,250 (25.2)	5,650 (40.7)	5,950 (50.1)	6,100 (56.4)	6,250 (61.2)	6,350 (64.7)	6,500 (67.9)	6,600 (70.4)
50				3,950 (33.0)	4,250 (44.8)	4,500 (52.1)	4,700 (57.6)	4,850 (61.5)	5,000 (65.1)	5,100 (67.8)
55				2,600 (23.2)	2,950 (38.8)	3,150 (47.6)	3,350 (53.9)	3,450 (58.2)	3,650 (62.2)	3,750 (65.1)
60					1,850 (32.0)	2,050 (42.8)	2,250 (49.9)	2,350 (54.8)	2,550 (59.2)	2,650 (62.4)
65					950 (23.5)	1,150 (37.4)	1,350 (45.8)	1,450 (51.3)	1,600 (56.1)	1,700 (59.6)
70							600 (41.3)	700 (47.6)	850 (52.9)	900 (56.7)
Minimum boom angle (°) for indicated length (no load)				0	18	32	41	46	51	55
Maximum boom length (ft.) at 0° boom angle (no load)				64						

NOTE: () Boom angles are in degrees.

#LMI operating code. Refer to LMI manual for operating instructions.

Lifting Capacities at Zero Degree Boom Angle										
Boom Angle	Main Boom Length in Feet									
	31.7	43-A	54-B	64-C						
0°	9,950 (27.5)	4,950 (38.8)	2,400 (19.8)	1,350 (59.8)						

NOTE: () Reference radii in feet.

80034333

26 FT. FIXED AND 26 FT. - 45 FT. TELE OFFSETTABLE BOOM EXTENSION
WITH 6000 lb COUNTERWEIGHT

ON OUTRIGGERS 50% EXTENDED - 360°

Radius in Feet	**26 ft. LENGTH		45 ft. LENGTH	
	#0405	#0407	#0409	#0411
	0° OFFSET	30° OFFSET	0° OFFSET	30° OFFSET
50	6,000 (72.6)			
55	5,800 (70.8)			
60	4,650 (68.5)			
65	3,650 (66.2)	4,900 (72.1)	4,050 (70.4)	
70	2,800 (63.8)	3,900 (69.4)	3,850 (68.7)	
75	2,100 (61.5)	3,050 (66.8)	3,100 (66.5)	2,800 (73.8)
80	1,500 (59.1)	2,350 (64.1)	2,400 (64.3)	2,700 (71.9)
85	1,000 (56.7)	1,700 (61.5)	1,850 (62.1)	2,650 (70.0)
90	500 (54.1)	1,150 (58.8)	1,350 (59.9)	2,550 (68.0)
95		700 (56.0)	950 (57.6)	2,000 (65.4)
100			550 (55.3)	1,500 (62.8)
105				1,050 (60.2)
110				650 (57.6)
Min. boom angle for indicated length (no load)	54°	54°	55°	56°
Max. boom length at 0° boom angle (no load)	64 ft.		64 ft.	

BOOM EXTENSION CAPACITY NOTES:

1. All capacities above the bold line are based on structural strength limitations.
2. 26 ft. and 45 ft. extension lengths may be used for single line lifting service.
3. Radii listed are for a fully extended boom with the boom extension erected. For main boom lengths less than fully extended, the rated loads are determined by boom angle. Use only the column which corresponds to the boom extension length and offset for which the machine is configured. For boom angles not shown, use the rating of the next lower boom angle.
WARNING: Operation of this machine with heavier loads than the capacities listed is strictly prohibited. Machine tipping with boom extension occurs rapidly and without advance warning.
4. Boom angle is the angle above or below horizontal of the longitudinal axis of the boom base section after lifting rated load.
5. Capacities listed are with outriggers properly extended and vertical jacks set only

NOTE: () Boom angles are in degrees. 80034338

#LMI operating code. Refer to LMI manual for instructions.

**26 ft. capacities are applicable to both 26' fixed and 26' tele extension.

**RATED LIFTING CAPACITIES IN POUNDS WITH 6000 lb COUNTERWEIGHT
31.7 FT. - 128 FT. BOOM**

ON OUTRIGGERS 0% EXTENDED - 360°

Radius in Feet	#0801									
	Main Boom Length in Feet									
	31.7	43-A	54-B	64-C	75-D	86-E	97-F	107-G	118-H	128
8	69,550 (68.0)									
10	44,400 (64.0)	40,050 (71.3)								
12	31,700 (59.8)	32,750 (68.4)	33,400 (73.2)							
15	21,200 (53.1)	22,150 (64.0)	22,700 (69.7)	23,050 (73.2)						
20	12,350 (40.2)	13,250 (56.1)	13,700 (63.8)	14,000 (68.3)	14,250 (71.9)					
25	7,800 (24.2)	8,500 (48.3)	8,950 (58.3)	9,250 (63.8)	9,450 (68.1)	9,650 (71.3)				
30		5,750 (38.3)	6,200 (51.6)	6,450 (58.6)	6,650 (63.8)	6,800 (67.6)	6,950 (70.6)			
35		3,700 (25.2)	4,150 (44.3)	4,400 (53.1)	4,600 (59.4)	4,750 (63.8)	4,900 (67.3)	5,000 (69.8)	5,150 (72.2)	
40			2,700 (35.9)	2,950 (47.1)	3,150 (54.7)	3,300 (60.0)	3,400 (63.9)	3,500 (66.8)	3,600 (69.5)	3,700 (71.4)
45			1,600 (25.1)	1,850 (40.5)	2,050 (49.8)	2,150 (55.9)	2,300 (60.5)	2,350 (63.8)	2,450 (66.7)	2,550 (68.9)
50				950 (32.8)	1,150 (44.5)	1,300 (51.7)	1,400 (56.9)	1,500 (60.6)	1,550 (63.9)	1,650 (66.3)
55					450 (38.6)	600 (47.2)	700 (53.2)	750 (57.4)	850 (61.0)	900 (63.7)
Minimum boom angle (°) for indicated length (no load)			0	25	38	46	52	56	59	62
Maximum boom length (ft.) at 0° boom angle (no load)			54							

NOTE: () Boom angles are in degrees.

#LMI operating code. Refer to LMI manual for operating instructions.

Lifting Capacities at Zero Degree Boom Angle										
Boom Angle	Main Boom Length in Feet									
	31.7	43-A	54-B							
0°	6,050 (27.5)	2,450 (38.8)	650 (19.8)							

NOTE: () Reference radii in feet.

80034334

**RATED LIFTING CAPACITIES IN POUNDS WITH 6000 lb COUNTERWEIGHT
31.7' - 128' BOOM WITH 26' FIXED or 26-45' TELE EXTENSION STOWED**

ON OUTRIGGERS 0% EXTENDED - 360°

Radius in Feet	#0802									
	Main Boom Length in Feet									
	31.7	43-A	54-B	64-C	75-D	86-E	97-F	107-G	118-H	128
8	68,400 (68.0)									
10	43,250 (64.0)	39,250 (71.3)								
12	30,550 (59.8)	31,950 (68.4)	32,800 (73.2)							
15	20,050 (53.1)	21,350 (64.0)	22,100 (69.7)	22,550 (73.2)						
20	11,200 (40.2)	12,450 (56.1)	13,100 (63.8)	13,500 (68.3)	13,800 (71.9)					
25	6,650 (24.2)	7,700 (48.3)	8,350 (58.3)	8,750 (63.8)	9,000 (68.1)	9,250 (71.3)				
30		4,950 (38.3)	5,600 (51.6)	5,950 (58.6)	6,200 (63.8)	6,400 (67.6)	6,600 (70.6)			
35		2,900 (25.2)	3,550 (44.3)	3,900 (53.1)	4,150 (59.4)	4,350 (63.8)	4,550 (67.3)	4,700 (69.8)	4,850 (72.2)	
40			2,100 (35.9)	2,450 (47.1)	2,700 (54.7)	2,900 (60.0)	3,050 (63.9)	3,200 (66.8)	3,300 (69.5)	3,450 (71.4)
45			1,000 (25.1)	1,350 (40.5)	1,600 (49.8)	1,750 (55.9)	1,950 (60.5)	2,050 (63.8)	2,150 (66.7)	2,300 (68.9)
50				450 (32.8)	700 (44.5)	900 (51.7)	1,050 (56.9)	1,200 (60.6)	1,250 (63.9)	1,400 (66.3)
55								450 (57.4)	550 (61.0)	650 (63.7)
Minimum boom angle (°) for indicated length (no load)			0	25	38	46	52	56	59	62
Maximum boom length (ft.) at 0° boom angle (no load)			54							

NOTE: () Boom angles are in degrees.

#LMI operating code. Refer to LMI manual for operating instructions.

Lifting Capacities at Zero Degree Boom Angle										
Boom Angle	Main Boom Length in Feet									
	31.7	43-A								
0°	4,900 (27.5)	1,650 (38.8)								

NOTE: () Reference radii in feet.

80034335

**RATED LIFTING CAPACITIES IN POUNDS WITH 3000 lb COUNTERWEIGHT
31.7 FT. - 128 FT. BOOM**

ON OUTRIGGERS FULLY EXTENDED - 360°

Radius in Feet	#1001									
	Main Boom Length in Feet									
	31.7	43-A	54-B	64-C	75-D	86-E	97-F	107-G	118-H	128
8	100,000 (68.1)									
10	92,250 (64.0)	40,050 (71.3)								
12	80,100 (59.8)	40,050 (68.5)	40,350 (73.3)							
15	63,450 (53.1)	40,050 (64.0)	40,350 (69.9)	40,300 (73.5)						
20	46,300 (40.2)	40,050 (56.2)	40,350 (64.2)	40,300 (68.8)	34,100 (72.5)					
25	31,650 (21.8)	36,500 (47.5)	36,950 (57.9)	37,150 (63.9)	30,100 (68.4)	22,650 (71.5)				
30		28,950 (37.3)	29,400 (51.2)	29,700 (58.6)	27,100 (64.2)	20,400 (68.0)	17,800 (71.2)			
35		22,300 (23.6)	23,900 (43.8)	24,300 (53.0)	24,550 (59.8)	18,500 (64.3)	16,300 (68.0)	14,700 (70.8)	12,900 (73.2)	
40			18,600 (35.2)	18,950 (47.0)	19,250 (55.0)	17,050 (60.5)	15,100 (64.8)	13,650 (68.0)	12,050 (70.8)	10,850 (73.0)
45			14,800 (24.0)	15,150 (40.2)	15,450 (50.0)	15,650 (56.5)	14,000 (61.5)	12,550 (65.0)	11,300 (68.2)	10,250 (70.8)
50				12,350 (32.4)	12,600 (44.5)	12,800 (52.2)	12,850 (58.0)	11,750 (62.0)	10,650 (65.8)	9,650 (68.4)
55				10,300 (23.3)	10,600 (39.2)	10,800 (48.1)	11,000 (54.6)	10,950 (59.2)	10,000 (63.2)	8,750 (65.9)
60					8,850 (32.3)	9,050 (43.2)	9,250 (50.6)	9,400 (55.8)	9,400 (60.4)	7,850 (63.3)
65					7,450 (23.8)	7,650 (37.8)	7,800 (46.4)	7,950 (52.2)	8,100 (57.3)	7,000 (60.6)
70					*4,650 (9.2)	6,500 (31.7)	6,650 (41.9)	6,800 (48.5)	6,900 (54.0)	6,300 (57.9)
75						5,500 (24.2)	5,650 (37.0)	5,800 (44.5)	5,900 (50.7)	5,700 (55.0)
80						*4,400 (12.8)	4,800 (31.4)	4,950 (40.2)	5,050 (47.2)	5,150 (52.1)
85							4,100 (24.7)	4,200 (35.6)	4,300 (43.5)	4,400 (48.9)
90							3,450 (15.2)	3,550 (30.2)	3,650 (39.5)	3,750 (45.5)
95								3,000 (23.8)	3,100 (35.2)	3,200 (42.0)
100								2,500 (14.8)	2,600 (30.2)	2,700 (38.1)
105									2,150 (24.4)	2,250 (33.9)
110									1,750 (16.6)	1,800 (29.2)
115										1,450 (23.5)
120										*1,100 (15.8)
Minimum boom angle (°) for indicated length (no load)							0	5	8	10
Maximum boom length (ft.) at 0° boom angle (no load)							97			

NOTE: () Boom angles are in degrees.

*Loads are structurally limited.

#LMI operating code. Refer to LMI manual for operating instructions.

Lifting Capacities at Zero Degree Boom Angle										
Boom Angle	Main Boom Length in Feet									
	31.7	43-A	54-B	64-C	75-D	86-E				
0°	12,900 (27.5)	7,600 (38.8)	4,850 (19.8)	3,700 (59.8)	2,200 (70.8)	1,150 (81.8)				

NOTE: () Reference radii in feet.

80034844A

**RATED LIFTING CAPACITIES IN POUNDS WITH 3000 lb COUNTERWEIGHT
31.7' - 128' BOOM WITH 26' FIXED or 26-45' TELE EXTENSION STOWED**

ON OUTRIGGERS FULLY EXTENDED - 360°

Radius in Feet	#1002									
	Main Boom Length in Feet									
	31.7	43-A	54-B	64-C	75-D	86-E	97-F	107-G	118-H	128
8	98,850 (68.1)									
10	91,100 (64.0)	39,250 (71.3)								
12	78,950 (59.8)	39,250 (68.5)	39,250 (73.3)							
15	62,300 (53.1)	39,250 (64.0)	39,250 (69.9)	39,250 (73.5)						
20	45,150 (40.2)	39,250 (56.2)	39,250 (64.2)	39,250 (68.8)	33,650 (72.5)					
25	30,500 (21.8)	35,700 (47.5)	36,350 (57.9)	36,650 (63.9)	29,650 (68.4)	22,250 (71.5)				
30		28,150 (37.3)	28,800 (51.2)	29,200 (58.6)	26,650 (64.2)	20,000 (68.0)	17,450 (71.2)			
35		21,500 (23.6)	23,300 (43.8)	23,800 (53.0)	24,100 (59.8)	18,100 (64.3)	15,950 (68.0)	14,400 (70.8)	12,600 (73.2)	
40			18,000 (35.2)	18,450 (47.0)	18,800 (55.0)	16,650 (60.5)	14,750 (64.8)	13,350 (68.0)	11,750 (70.8)	10,600 (73.0)
45			14,200 (24.0)	14,650 (40.2)	15,000 (50.0)	15,250 (56.5)	13,650 (61.5)	12,250 (65.0)	11,000 (68.2)	10,000 (70.8)
50				11,850 (32.4)	12,150 (44.5)	12,400 (52.2)	12,500 (58.0)	11,450 (62.0)	10,350 (65.8)	9,400 (68.4)
55				9,800 (23.3)	10,150 (39.2)	10,400 (48.1)	10,650 (54.6)	10,650 (59.2)	9,700 (63.2)	8,500 (65.9)
60					8,400 (32.3)	8,650 (43.2)	8,900 (50.6)	9,100 (55.8)	9,100 (60.4)	7,600 (63.3)
65					7,000 (23.8)	7,250 (37.8)	7,450 (46.4)	7,650 (52.2)	7,800 (57.3)	6,750 (60.6)
70					*4,200 (9.2)	6,100 (31.7)	6,300 (41.9)	6,500 (48.5)	6,600 (54.0)	6,050 (57.9)
75						5,100 (24.2)	5,300 (37.0)	5,500 (44.5)	5,600 (50.7)	5,450 (55.0)
80						*4,000 (12.8)	4,450 (31.4)	4,650 (40.2)	4,750 (47.2)	4,900 (52.1)
85							3,750 (24.7)	3,900 (35.6)	4,000 (43.5)	4,150 (48.9)
90							3,100 (15.2)	3,250 (30.2)	3,350 (39.5)	3,500 (45.5)
95								2,700 (23.8)	2,800 (35.2)	2,950 (42.0)
100								2,200 (14.8)	2,300 (30.2)	2,450 (38.1)
105									1,850 (24.4)	2,000 (33.9)
110									1,450 (16.6)	1,550 (29.2)
115										1,200 (23.5)
120										*850 (15.8)
Minimum boom angle (°) for indicated length (no load)							0	5	8	10
Maximum boom length (ft.) at 0° boom angle (no load)							97			

NOTE: () Boom angles are in degrees.

*Loads are structurally limited.

#LMI operating code. Refer to LMI manual for operating instructions.

Lifting Capacities at Zero Degree Boom Angle										
Boom Angle	Main Boom Length in Feet									
	31.7	43-A	54-B	64-C	75-D	86-E				
0°	11,750 (27.5)	6,800 (38.8)	4,250 (19.8)	3,200 (59.8)	1,750 (70.8)	750 (81.8)				

NOTE: () Reference radii in feet.

80034845A

**RATED LIFTING CAPACITIES IN POUNDS WITH 3000 lb COUNTERWEIGHT
31.7' - 128' BOOM WITH 26' FIXED ERECTED or 26-45' EXT ERECTED, RETRACTED**

ON OUTRIGGERS FULLY EXTENDED - 360°

Radius in Feet	#1017									
	Main Boom Length in Feet									
	31.7	43-A	54-B	64-C	75-D	86-E	97-F	107-G	118-H	128
8	97,450 (68.1)									
10	89,700 (64.0)	37,700 (71.3)								
12	77,550 (59.8)	37,700 (68.5)	37,700 (73.3)							
15	60,900 (53.1)	37,700 (64.0)	37,700 (69.9)	37,700 (73.5)						
20	43,750 (40.2)	37,700 (56.2)	37,700 (64.2)	37,700 (68.8)	32,000 (72.5)					
25	29,100 (21.8)	34,150 (47.5)	34,700 (57.9)	35,000 (63.9)	28,000 (68.4)	20,550 (71.5)				
30		26,600 (37.3)	27,150 (51.2)	27,550 (58.6)	25,000 (64.2)	18,300 (68.0)	15,750 (71.2)			
35		19,950 (23.6)	21,650 (43.8)	22,150 (53.0)	22,450 (59.8)	16,400 (64.3)	14,250 (68.0)	12,650 (70.8)	10,900 (73.2)	
40			16,350 (35.2)	16,800 (47.0)	17,150 (55.0)	14,950 (60.5)	13,050 (64.8)	11,600 (68.0)	10,050 (70.8)	8,850 (73.0)
45			12,550 (24.0)	13,000 (40.2)	13,350 (50.0)	13,550 (56.5)	11,950 (61.5)	10,500 (65.0)	9,300 (68.2)	8,250 (70.8)
50				10,200 (32.4)	10,500 (44.5)	10,700 (52.2)	10,800 (58.0)	9,700 (62.0)	8,650 (65.8)	7,650 (68.4)
55				8,150 (23.3)	8,500 (39.2)	8,700 (48.1)	8,950 (54.6)	8,900 (59.2)	8,000 (63.2)	6,750 (65.9)
60					6,750 (32.3)	6,950 (43.2)	7,200 (50.6)	7,350 (55.8)	7,400 (60.4)	5,850 (63.3)
65					5,350 (23.8)	5,550 (37.8)	5,750 (46.4)	5,900 (52.2)	6,100 (57.3)	5,000 (60.6)
70					*2,550 (9.2)	4,400 (31.7)	4,600 (41.9)	4,750 (48.5)	4,900 (54.0)	4,300 (57.9)
75						3,400 (24.2)	3,600 (37.0)	3,750 (44.5)	3,900 (50.7)	3,700 (55.0)
80						*2,300 (12.8)	2,750 (31.4)	2,900 (40.2)	3,050 (47.2)	3,150 (52.1)
85							2,050 (24.7)	2,150 (35.6)	2,300 (43.5)	2,400 (48.9)
90							1,400 (15.2)	1,500 (30.2)	1,650 (39.5)	1,750 (45.5)
95								950 (23.8)	1,100 (35.2)	1,200 (42.0)
100								450 (14.8)	600 (30.2)	700 (38.1)
Minimum boom angle (°) for indicated length (no load)				0	2	5	7	14	29	34
Maximum boom length (ft.) at 0° boom angle (no load)				64						

NOTE: () Boom angles are in degrees.

*Loads are structurally limited.

#LMI operating code. Refer to LMI manual for operating instructions.

Lifting Capacities at Zero Degree Boom Angle										
Boom Angle	Main Boom Length in Feet									
	31.7	43-A	54-B	64-C						
0°	10,350 (27.5)	5,250 (38.8)	2,600 (19.8)	1,550 (59.8)						

NOTE: () Reference radii in feet.

80034846A

**RATED LIFTING CAPACITIES IN POUNDS WITH 3000 lb COUNTERWEIGHT
31.7' - 128' BOOM WITH 26-45' EXT ERECTED, EXTENDED**

ON OUTRIGGERS FULLY EXTENDED - 360°

Radius in Feet	#1018									
	Main Boom Length in Feet									
	31.7	43-A	54-B	64-C	75-D	86-E	97-F	107-G	118-H	128
8	97,050 (68.1)									
10	89,300 (64.0)	37,400 (71.3)								
12	77,150 (59.8)	37,400 (68.5)	37,400 (73.3)							
15	60,500 (53.1)	37,400 (64.0)	37,400 (69.9)	37,400 (73.5)						
20	43,350 (40.2)	37,400 (56.2)	37,400 (64.2)	37,400 (68.8)	31,850 (72.5)					
25	28,700 (21.8)	33,850 (47.5)	34,500 (57.9)	34,800 (63.9)	27,850 (68.4)	20,450 (71.5)				
30		26,300 (37.3)	26,950 (51.2)	27,350 (58.6)	24,850 (64.2)	18,200 (68.0)	15,650 (71.2)			
35		19,650 (23.6)	21,450 (43.8)	21,950 (53.0)	22,300 (59.8)	16,300 (64.3)	14,150 (68.0)	12,550 (70.8)	10,800 (73.2)	
40			16,150 (35.2)	16,600 (47.0)	17,000 (55.0)	14,850 (60.5)	12,950 (64.8)	11,500 (68.0)	9,950 (70.8)	8,750 (73.0)
45			12,350 (24.0)	12,800 (40.2)	13,200 (50.0)	13,450 (56.5)	11,850 (61.5)	10,400 (65.0)	9,200 (68.2)	8,150 (70.8)
50				10,000 (32.4)	10,350 (44.5)	10,600 (52.2)	10,700 (58.0)	9,600 (62.0)	8,550 (65.8)	7,550 (68.4)
55				7,950 (23.3)	8,350 (39.2)	8,600 (48.1)	8,850 (54.6)	8,800 (59.2)	7,900 (63.2)	6,650 (65.9)
60					6,600 (32.3)	6,850 (43.2)	7,100 (50.6)	7,250 (55.8)	7,300 (60.4)	5,750 (63.3)
65					5,200 (23.8)	5,450 (37.8)	5,650 (46.4)	5,800 (52.2)	6,000 (57.3)	4,900 (60.6)
70					*2,400 (9.2)	4,300 (31.7)	4,500 (41.9)	4,650 (48.5)	4,800 (54.0)	4,200 (57.9)
75						3,300 (24.2)	3,500 (37.0)	3,650 (44.5)	3,800 (50.7)	3,600 (55.0)
80						*2,200 (12.8)	2,650 (31.4)	2,800 (40.2)	2,950 (47.2)	3,050 (52.1)
85							1,950 (24.7)	2,050 (35.6)	2,200 (43.5)	2,300 (48.9)
90							1,300 (15.2)	1,400 (30.2)	1,550 (39.5)	1,650 (45.5)
95							850 (23.8)	1,000 (35.2)	1,100 (42.0)	
100								500 (30.2)	600 (38.1)	
Minimum boom angle (°) for indicated length (no load)				0	3	6	10	18	29	36
Maximum boom length (ft.) at 0° boom angle (no load)				64						

NOTE: () Boom angles are in degrees.

*Loads are structurally limited.

#LMI operating code. Refer to LMI manual for operating instructions.

Lifting Capacities at Zero Degree Boom Angle									
Boom Angle	Main Boom Length in Feet								
	31.7	43-A	54-B	64-C					
0°	9,950 (27.5)	4,950 (38.8)	2,400 (19.8)	1,350 (59.8)					

NOTE: () Reference radii in feet.

80034848A

**RATED LIFTING CAPACITIES IN POUNDS WITH 3000 lb COUNTERWEIGHT
31.7 FT. - 128 FT. BOOM**

ON OUTRIGGERS FULLY EXTENDED - OVER REAR

Radius in Feet	#1003									
	Main Boom Length in Feet									
	31.7	43-A	54-B	64-C	75-D	86-E	97-F	107-G	118-H	128
8	100,000 (68.1)									
10	92,250 (64.0)	40,050 (71.3)								
12	80,100 (59.8)	40,050 (68.5)	40,350 (73.3)							
15	63,450 (53.1)	40,050 (64.0)	40,350 (69.9)	40,300 (73.5)						
20	46,300 (40.2)	40,050 (56.2)	40,350 (64.2)	40,300 (68.8)	34,100 (72.5)					
25	31,650 (21.8)	36,500 (47.5)	36,950 (57.9)	37,150 (63.9)	30,100 (68.4)	22,650 (71.5)				
30		28,950 (37.3)	29,400 (51.2)	29,700 (58.6)	27,100 (64.2)	20,400 (68.0)	17,800 (71.2)			
35		22,300 (23.6)	24,000 (43.8)	24,300 (53.0)	24,550 (59.8)	18,500 (64.3)	16,300 (68.0)	14,700 (70.8)	12,900 (73.2)	
40			20,000 (35.2)	20,300 (47.0)	20,550 (55.1)	17,050 (60.5)	15,100 (64.8)	13,650 (68.0)	12,050 (70.8)	10,850 (73.0)
45			16,400 (24.0)	16,800 (40.3)	17,050 (50.0)	15,800 (56.5)	14,000 (61.5)	12,550 (65.0)	11,300 (68.2)	10,250 (70.8)
50				13,900 (32.4)	14,150 (44.6)	14,350 (52.3)	12,850 (58.0)	11,750 (62.0)	10,650 (65.8)	9,650 (68.4)
55				11,650 (22.2)	11,900 (38.6)	12,100 (47.8)	12,000 (54.4)	10,950 (59.2)	10,000 (63.2)	8,750 (65.9)
60					10,200 (32.4)	10,400 (43.3)	10,550 (50.8)	10,300 (56.0)	9,400 (60.4)	7,850 (63.3)
65					8,700 (23.9)	8,900 (38.0)	9,050 (46.6)	9,200 (52.5)	8,850 (57.5)	7,000 (60.6)
70					*4,650 (9.2)	7,650 (31.8)	7,850 (42.1)	7,950 (48.7)	8,100 (54.4)	6,300 (57.9)
75						6,600 (24.3)	6,750 (37.2)	6,900 (44.8)	7,000 (51.0)	5,700 (55.0)
80						*4,400 (12.8)	5,850 (31.6)	6,000 (40.5)	6,100 (47.5)	5,150 (52.1)
85							5,100 (24.9)	5,200 (35.8)	5,300 (43.8)	4,650 (49.0)
90							*3,850 (15.3)	4,500 (30.5)	4,600 (39.8)	4,150 (45.7)
95								3,900 (24.1)	4,000 (35.5)	3,700 (42.2)
100								*2,800 (14.9)	3,450 (30.5)	3,300 (38.4)
105									2,950 (24.7)	3,000 (34.3)
110									*2,400 (16.8)	2,600 (29.5)
115										*1,900 (23.7)
120										*1,100 (15.8)
Minimum boom angle (°) for indicated length (no load)							0	5	8	10
Maximum boom length (ft.) at 0° boom angle (no load)							97			

NOTE: () Boom angles are in degrees.

*Loads are structurally limited.

#LMI operating code. Refer to LMI manual for operating instructions.

Lifting Capacities at Zero Degree Boom Angle										
Boom Angle	Main Boom Length in Feet									
	31.7	43-A	54-B	64-C	75-D	86-E				
0°	12,900 (27.5)	7,600 (38.8)	4,850 (19.8)	3,700 (59.8)	2,200 (70.8)	1,150 (81.8)				

NOTE: () Reference radii in feet.

80034849A

**RATED LIFTING CAPACITIES IN POUNDS WITH 3000 lb COUNTERWEIGHT
31.7' - 128' BOOM WITH 26' FIXED or 26-45' TELE EXTENSION STOWED**

ON OUTRIGGERS FULLY EXTENDED - OVER REAR

Radius in Feet	#1004									
	Main Boom Length in Feet									
	31.7	43-A	54-B	64-C	75-D	86-E	97-F	107-G	118-H	128
8	98,850 (68.1)									
10	91,100 (64.0)	39,250 (71.3)								
12	78,950 (59.8)	39,250 (68.5)	39,250 (73.3)							
15	62,300 (53.1)	39,250 (64.0)	39,250 (69.9)	39,250 (73.5)						
20	45,150 (40.2)	39,250 (56.2)	39,250 (64.2)	39,250 (68.8)	33,650 (72.5)					
25	30,500 (21.8)	35,700 (47.5)	36,350 (57.9)	36,650 (63.9)	29,650 (68.4)	22,250 (71.5)				
30		28,150 (37.3)	28,800 (51.2)	29,200 (58.6)	26,650 (64.2)	20,000 (68.0)	17,450 (71.2)			
35		21,500 (23.6)	23,400 (43.8)	23,800 (53.0)	24,100 (59.8)	18,100 (64.3)	15,950 (68.0)	14,400 (70.8)	12,600 (73.2)	
40			19,400 (35.2)	19,800 (47.0)	20,100 (55.1)	16,650 (60.5)	14,750 (64.8)	13,350 (68.0)	11,750 (70.8)	10,600 (73.0)
45			15,800 (24.0)	16,300 (40.3)	16,600 (50.0)	15,400 (56.5)	13,650 (61.5)	12,250 (65.0)	11,000 (68.2)	10,000 (70.8)
50				13,400 (32.4)	13,700 (44.6)	13,950 (52.3)	12,500 (58.0)	11,450 (62.0)	10,350 (65.8)	9,400 (68.4)
55				11,150 (22.2)	11,450 (38.6)	11,700 (47.8)	11,650 (54.4)	10,650 (59.2)	9,700 (63.2)	8,500 (65.9)
60					9,750 (32.4)	10,000 (43.3)	10,200 (50.8)	10,000 (56.0)	9,100 (60.4)	7,600 (63.3)
65					8,250 (23.9)	8,500 (38.0)	8,700 (46.6)	8,900 (52.5)	8,550 (57.5)	6,750 (60.6)
70					*4,200 (9.2)	7,250 (31.8)	7,500 (42.1)	7,650 (48.7)	7,800 (54.4)	6,050 (57.9)
75						6,200 (24.3)	6,400 (37.2)	6,600 (44.8)	6,700 (51.0)	5,450 (55.0)
80						*4,000 (12.8)	5,500 (31.6)	5,700 (40.5)	5,800 (47.5)	4,900 (52.1)
85							4,750 (24.9)	4,900 (35.8)	5,000 (43.8)	4,400 (49.0)
90							*3,500 (15.3)	4,200 (30.5)	4,300 (39.8)	3,900 (45.7)
95								3,600 (24.1)	3,700 (35.5)	3,450 (42.2)
100								*2,500 (14.9)	3,150 (30.5)	3,050 (38.4)
105									2,650 (24.7)	2,750 (34.3)
110									*2,100 (16.8)	2,350 (29.5)
115										*1,650 (23.7)
120										*850 (15.8)
Minimum boom angle (°) for indicated length (no load)							0	5	8	10
Maximum boom length (ft.) at 0° boom angle (no load)							97			

NOTE: () Boom angles are in degrees.

*Loads are structurally limited.

#LMI operating code. Refer to LMI manual for operating instructions.

Lifting Capacities at Zero Degree Boom Angle										
Boom Angle	Main Boom Length in Feet									
	31.7	43-A	54-B	64-C	75-D	86-E				
0°	11,750 (27.5)	6,800 (38.8)	4,250 (19.8)	3,200 (59.8)	1,750 (70.8)	750 (81.8)				

NOTE: () Reference radii in feet.

80034850A

**26 FT. FIXED AND 26 FT. - 45 FT. TELE OFFSETTABLE BOOM EXTENSION
WITH 3000 lb COUNTERWEIGHT**

ON OUTRIGGERS FULLY EXTENDED - 360°

Radius in Feet	**26 ft. LENGTH		45 ft. LENGTH	
	#1005	#1007	#1009	#1011
	0° OFFSET	30° OFFSET	0° OFFSET	30° OFFSET
50	6,000 (72.6)			
55	5,800 (70.8)			
60	5,500 (69.0)			
65	5,200 (67.0)	4,900 (72.1)	4,050 (70.4)	
70	4,850 (65.0)	4,650 (69.9)	4,000 (68.8)	
75	4,500 (62.9)	4,400 (67.7)	3,950 (67.2)	2,800 (73.8)
80	4,250 (60.8)	4,150 (65.4)	3,900 (65.6)	2,700 (71.9)
85	3,950 (58.6)	4,000 (63.1)	3,800 (63.9)	2,650 (70.0)
90	3,600 (56.2)	3,800 (60.7)	3,550 (62.0)	2,600 (68.0)
95	3,000 (53.6)	3,550 (58.2)	3,250 (59.9)	2,550 (66.0)
100	2,450 (50.9)	2,950 (55.3)	3,000 (57.8)	2,500 (63.9)
105	2,000 (48.2)	1,450 (51.5)	2,700 (55.6)	2,450 (61.8)
110	1,600 (45.3)	1,950 (49.1)	2,400 (53.3)	2,400 (59.5)
115	1,200 (42.2)	1,500 (45.8)	2,000 (50.8)	2,350 (57.2)
120	850 (39.0)	1,100 (42.4)	1,650 (48.3)	2,200 (54.6)
125	550 (35.6)	750 (38.6)	1,300 (45.6)	1,800 (51.6)
130			1,000 (42.8)	1,450 (48.5)
135			700 (39.8)	1,050 (45.2)
140			450 (36.7)	800 (41.7)
145				500 (37.9)
Min. boom angle for indicated length (no load)	34°	34°	36°	36°
Max. boom length at 0° boom angle (no load)	64 ft.		64 ft.	

NOTE: () Boom angles are in degrees. 80034857A

#LMI operating code. Refer to LMI manual for instructions.

**26 ft. capacities are applicable to both 26' fixed and 26' tele extension.

BOOM EXTENSION CAPACITY

NOTES:

1. All capacities above the bold line are based on structural strength limitations.
 2. 26 ft. and 45 ft. extension lengths may be used for single line lifting service.
 3. Radii listed are for a fully extended boom with the boom extension erected. For main boom lengths less than fully extended, the rated loads are determined by boom angle. Use only the column which corresponds to the boom extension length and offset for which the machine is configured. For boom angles not shown, use the rating of the next lower boom angle.
- WARNING:** Operation of this machine with heavier loads than the capacities listed is strictly prohibited. Machine tipping with boom extension occurs rapidly and without advance warning.
4. Boom angle is the angle above or below horizontal of the longitudinal axis of the boom base section after lifting rated load.
 5. Capacities listed are with outriggers properly extended and vertical jacks set only.

**26 FT. FIXED AND 26 FT. - 45 FT. TELE OFFSETTABLE BOOM EXTENSION
WITH 3000 lb COUNTERWEIGHT**

ON OUTRIGGERS FULLY EXTENDED - OVER REAR

Radius in Feet	**26 ft. LENGTH		45 ft. LENGTH	
	#1006	#1008	#1010	#1012
	0° OFFSET	30° OFFSET	0° OFFSET	30° OFFSET
50	6,000 (72.6)			
55	5,800 (70.8)			
60	5,500 (69.0)			
65	5,200 (67.0)	4,900 (72.1)	4,050 (70.4)	
70	4,850 (65.0)	4,650 (69.9)	4,000 (68.8)	
75	4,500 (62.9)	4,400 (67.7)	3,950 (67.2)	2,800 (73.8)
80	4,250 (60.8)	4,150 (65.4)	3,900 (65.6)	2,700 (71.9)
85	3,950 (58.6)	4,000 (63.1)	3,800 (63.9)	2,650 (70.0)
90	3,800 (56.4)	3,800 (60.7)	3,550 (62.0)	2,600 (68.0)
95	3,650 (54.1)	3,650 (58.3)	3,250 (59.9)	2,550 (66.0)
100	3,150 (51.5)	3,350 (55.6)	3,000 (57.8)	2,500 (63.9)
105	2,600 (48.6)	2,900 (52.6)	2,700 (55.6)	2,450 (61.8)
110	2,100 (45.7)	2,550 (49.6)	2,500 (53.5)	2,400 (59.5)
115	1,700 (42.6)	2,150 (46.3)	2,300 (51.2)	2,350 (57.2)
120	1,350 (39.4)	1,650 (42.8)	2,050 (48.7)	2,300 (54.7)
125	950 (35.9)	1,200 (39.0)	1,750 (46.1)	2,250 (52.1)
130	650 (32.1)	850 (34.8)	1,500 (43.4)	2,100 (49.2)
135		450 (30.0)	1,200 (40.4)	1,700 (45.8)
140			900 (37.3)	*1,350 (42.3)
145			650 (33.9)	*900 (38.3)
150				*600 (33.9)
Min. boom angle for indicated length (no load)	29°	30°	30°	31°
Max. boom length at 0° boom angle (no load)	64 ft.		64 ft.	

NOTE: () Boom angles are in degrees. 80034858A

#LMI operating code. Refer to LMI manual for instructions.

*Capacities are structurally limited.

**26 ft. capacities are applicable to both 26' fixed and 26' tele extension.

BOOM EXTENSION CAPACITY NOTES:

1. All capacities above the bold line are based on structural strength limitations
2. 26 ft. and 45 ft. extension lengths may be used for single line lifting service.
3. Radii listed are for a fully extended boom with the boom extension erected. For main boom lengths less than fully extended, the rated loads are determined by boom angle. Use only the column which corresponds to the boom extension length and offset for which the machine is configured. For boom angles not shown, use the rating of the next lower boom angle.

WARNING: Operation of this machine with heavier loads than the capacities listed is strictly prohibited. Machine tipping with boom extension occurs rapidly and without advance warning.
4. Boom angle is the angle above or below horizontal of the longitudinal axis of the boom base section after lifting rated load.
5. Capacities listed are with outriggers properly extended and vertical jacks set only.

**RATED LIFTING CAPACITIES IN POUNDS WITH 3000 lb COUNTERWEIGHT
31.7 FT. - 128 FT. BOOM
ON OUTRIGGERS 50% EXTENDED - 360°**

Radius in Feet	#1401									
	Main Boom Length in Feet									
	31.7	43-A	54-B	64-C	75-D	86-E	97-F	107-G	118-H	128
8	100,000 (68.1)									
10	92,250 (64.0)	40,050 (71.3)								
12	80,100 (59.8)	40,050 (68.5)	40,350 (73.3)							
15	57,600 (53.1)	40,050 (64.0)	40,350 (69.9)	40,300 (73.5)						
20	30,800 (40.2)	31,950 (56.2)	32,600 (64.0)	33,050 (68.7)	33,500 (72.4)					
25	19,600 (21.8)	20,700 (47.4)	21,250 (57.8)	21,600 (63.6)	21,900 (68.1)	22,200 (71.5)				
30		14,500 (37.2)	15,050 (51.1)	15,350 (58.3)	15,650 (63.7)	15,850 (67.7)	16,150 (71.0)			
35		10,550 (25.2)	11,100 (44.4)	11,350 (52.7)	11,600 (59.2)	11,800 (63.9)	12,050 (67.6)	12,250 (70.5)	12,500 (73.2)	
40			8,350 (36.0)	8,650 (47.3)	8,850 (55.0)	9,050 (60.3)	9,250 (64.5)	9,400 (67.6)	9,600 (70.5)	9,750 (72.8)
45			6,450 (25.2)	6,750 (40.7)	7,000 (50.0)	7,150 (56.3)	7,300 (61.0)	7,450 (64.5)	7,650 (67.7)	7,800 (70.2)
50				5,200 (33.0)	5,450 (44.7)	5,600 (52.1)	5,750 (57.5)	5,900 (61.3)	6,000 (64.8)	6,150 (67.5)
55				4,000 (23.1)	4,200 (38.8)	4,350 (47.6)	4,500 (53.7)	4,650 (58.1)	4,750 (61.9)	4,850 (64.8)
60					3,200 (32.0)	3,400 (42.7)	3,500 (49.8)	3,600 (54.7)	3,750 (59.0)	3,800 (62.1)
65					2,400 (23.5)	2,550 (37.4)	2,700 (45.7)	2,800 (51.2)	2,900 (55.9)	2,950 (59.3)
70					1,700 (9.1)	1,850 (31.2)	2,000 (41.2)	2,100 (47.5)	2,200 (52.7)	2,250 (56.5)
75						1,300 (23.8)	1,400 (36.3)	1,500 (43.5)	1,600 (49.4)	1,650 (53.6)
80						750 (12.5)	900 (30.7)	1,000 (39.3)	1,050 (46.0)	1,150 (50.6)
85							450 (24.0)	550 (34.7)	600 (42.3)	700 (47.4)
Minimum boom angle (°) for indicated length (no load)						0	23	33	40	45
Maximum boom length (ft.) at 0° boom angle (no load)						86				

NOTE: () Boom angles are in degrees.

#LMI operating code. Refer to LMI manual for operating instructions.

Lifting Capacities at Zero Degree Boom Angle										
Boom Angle	Main Boom Length in Feet									
	31.7	43-A	54-B	64-C	75-D	86-E				
0°	12,900 (27.5)	7,600 (38.8)	4,850 (19.8)	3,000 (59.8)	1,550 (70.8)	600 (81.8)				

NOTE: () Reference radii in feet.

80034851A

**RATED LIFTING CAPACITIES IN POUNDS WITH 3000 lb COUNTERWEIGHT
31.7' - 128' BOOM WITH 26' FIXED or 26-45' TELE EXTENSION STOWED
ON OUTRIGGERS 50% EXTENDED - 360°**

Radius in Feet	#1402									
	Main Boom Length in Feet									
	31.7	43-A	54-B	64-C	75-D	86-E	97-F	107-G	118-H	128
8	98,850 (68.1)									
10	91,100 (64.0)	39,250 (71.3)								
12	78,950 (59.8)	39,250 (68.5)	39,250 (73.3)							
15	56,450 (53.1)	39,250 (64.0)	39,250 (69.9)	39,250 (73.5)						
20	29,650 (40.2)	31,150 (56.2)	32,000 (64.0)	32,550 (68.7)	33,050 (72.4)					
25	18,450 (21.8)	19,900 (47.4)	20,650 (57.8)	21,100 (63.6)	21,450 (68.1)	21,800 (71.5)				
30		13,700 (37.2)	14,450 (51.1)	14,850 (58.3)	15,200 (63.7)	15,450 (67.7)	15,800 (71.0)			
35		9,750 (25.2)	10,500 (44.4)	10,850 (52.7)	11,150 (59.2)	11,400 (63.9)	11,700 (67.6)	11,950 (70.5)	12,200 (73.2)	
40			7,750 (36.0)	8,150 (47.3)	8,400 (55.0)	8,650 (60.3)	8,900 (64.5)	9,100 (67.6)	9,300 (70.5)	9,500 (72.8)
45			5,850 (25.2)	6,250 (40.7)	6,550 (50.0)	6,750 (56.3)	6,950 (61.0)	7,150 (64.5)	7,350 (67.7)	7,550 (70.2)
50				4,700 (33.0)	5,000 (44.7)	5,200 (52.1)	5,400 (57.5)	5,600 (61.3)	5,700 (64.8)	5,900 (67.5)
55				3,500 (23.1)	3,750 (38.8)	3,950 (47.6)	4,150 (53.7)	4,350 (58.1)	4,450 (61.9)	4,600 (64.8)
60					2,750 (32.0)	3,000 (42.7)	3,150 (49.8)	3,300 (54.7)	3,450 (59.0)	3,550 (62.1)
65					1,950 (23.5)	2,150 (37.4)	2,350 (45.7)	2,500 (51.2)	2,600 (55.9)	2,700 (59.3)
70					1,250 (9.1)	1,450 (31.2)	1,650 (41.2)	1,800 (47.5)	1,900 (52.7)	2,000 (56.5)
75						900 (23.8)	1,050 (36.3)	1,200 (43.5)	1,300 (49.4)	1,400 (53.6)
80							550 (30.7)	700 (39.3)	750 (46.0)	900 (50.6)
85										450 (47.4)
Minimum boom angle (°) for indicated length (no load)						0	23	33	40	45
Maximum boom length (ft.) at 0° boom angle (no load)						86				

NOTE: () Boom angles are in degrees.

#LMI operating code. Refer to LMI manual for operating instructions.

Lifting Capacities at Zero Degree Boom Angle										
Boom Angle	Main Boom Length in Feet									
	31.7	43-A	54-B	64-C	75-D					
0°	11,750 (27.5)	6,800 (38.8)	4,250 (19.8)	2,500 (59.8)	1,100 (70.8)					

NOTE: () Reference radii in feet.

80034852A

**RATED LIFTING CAPACITIES IN POUNDS WITH 3000 lb COUNTERWEIGHT
31.7' - 128' BOOM WITH 26' FIXED ERECTED or 26-45' EXT ERECTED, RETRACTED
ON OUTRIGGERS 50% EXTENDED - 360°**

Radius in Feet	#1417									
	Main Boom Length in Feet									
	31.7	43-A	54-B	64-C	75-D	86-E	97-F	107-G	118-H	128
8	97,450 (68.1)									
10	89,700 (64.0)	37,700 (71.3)								
12	77,550 (59.8)	37,700 (68.5)	37,700 (73.3)							
15	55,050 (53.1)	37,700 (64.0)	37,700 (69.9)	37,700 (73.5)						
20	28,250 (40.2)	29,600 (56.2)	30,350 (64.0)	30,900 (68.7)	31,400 (72.4)					
25	17,050 (21.8)	18,350 (47.4)	19,000 (57.8)	19,450 (63.6)	19,800 (68.1)	20,100 (71.5)				
30		12,150 (37.2)	12,800 (51.1)	13,200 (58.3)	13,550 (63.7)	13,750 (67.7)	14,100 (71.0)			
35		8,200 (25.2)	8,850 (44.4)	9,200 (52.7)	9,500 (59.2)	9,700 (63.9)	10,000 (67.6)	10,200 (70.5)	10,500 (73.2)	
40			6,100 (36.0)	6,500 (47.3)	6,750 (55.0)	6,950 (60.3)	7,200 (64.5)	7,350 (67.6)	7,600 (70.5)	7,750 (72.8)
45			4,200 (25.2)	4,600 (40.7)	4,900 (50.0)	5,050 (56.3)	5,250 (61.0)	5,400 (64.5)	5,650 (67.7)	5,800 (70.2)
50				3,050 (33.0)	3,350 (44.7)	3,500 (52.1)	3,700 (57.5)	3,850 (61.3)	4,000 (64.8)	4,150 (67.5)
55				1,850 (23.1)	2,100 (38.8)	2,250 (47.6)	2,450 (53.7)	2,600 (58.1)	2,750 (61.9)	2,850 (64.8)
60					1,100 (32.0)	1,300 (42.7)	1,450 (49.8)	1,550 (54.7)	1,750 (59.0)	1,800 (62.1)
65						450 (37.4)	650 (45.7)	750 (51.2)	900 (55.9)	950 (59.3)
Minimum boom angle (°) for indicated length (no load)				0	27	37	45	50	54	57
Maximum boom length (ft.) at 0° boom angle (no load)				64						

NOTE: () Boom angles are in degrees.
#LMI operating code. Refer to LMI manual for operating instructions.

Lifting Capacities at Zero Degree Boom Angle									
Boom Angle	Main Boom Length in Feet								
	31.7	43-A	54-B	64-C					
0°	10,350 (27.5)	5,250 (38.8)	2,600 (19.8)	850 (59.8)					

NOTE: () Reference radii in feet.

80034853A

**RATED LIFTING CAPACITIES IN POUNDS WITH 3000 lb COUNTERWEIGHT
31.7' - 128' BOOM WITH 26-45' EXT ERECTED, EXTENDED
ON OUTRIGGERS 50% EXTENDED - 360°**

Radius in Feet	#1418									
	Main Boom Length in Feet									
	31.7	43-A	54-B	64-C	75-D	86-E	97-F	107-G	118-H	128
8	97,050 (68.1)									
10	89,300 (64.0)	37,400 (71.3)								
12	77,150 (59.8)	37,400 (68.5)	37,400 (73.3)							
15	54,650 (53.1)	37,400 (64.0)	37,400 (69.9)	37,400 (73.5)						
20	27,850 (40.2)	29,300 (56.2)	30,150 (64.0)	30,700 (68.7)	31,250 (72.4)					
25	16,650 (21.8)	18,050 (47.4)	18,800 (57.8)	19,250 (63.6)	19,650 (68.1)	20,000 (71.5)				
30		11,850 (37.2)	12,600 (51.1)	13,000 (58.3)	13,400 (63.7)	13,650 (67.7)	14,000 (71.0)			
35		7,900 (25.2)	8,650 (44.4)	9,000 (52.7)	9,350 (59.2)	9,600 (63.9)	9,900 (67.6)	10,100 (70.5)	10,400 (73.2)	
40			5,900 (36.0)	6,300 (47.3)	6,600 (55.0)	6,850 (60.3)	7,100 (64.5)	7,250 (67.6)	7,500 (70.5)	7,650 (72.8)
45			4,000 (25.2)	4,400 (40.7)	4,750 (50.0)	4,950 (56.3)	5,150 (61.0)	5,300 (64.5)	5,550 (67.7)	5,700 (70.2)
50				2,850 (33.0)	3,200 (44.7)	3,400 (52.1)	3,600 (57.5)	3,750 (61.3)	3,900 (64.8)	4,050 (67.5)
55				1,650 (23.1)	1,950 (38.8)	2,150 (47.6)	2,350 (53.7)	2,500 (58.1)	2,650 (61.9)	2,750 (64.8)
60					950 (32.0)	1,200 (42.7)	1,350 (49.8)	1,450 (54.7)	1,650 (59.0)	1,700 (62.1)
65							550 (45.7)	650 (51.2)	800 (55.9)	850 (59.3)
Minimum boom angle (°) for indicated length (no load)				0	28	39	45	50	55	58
Maximum boom length (ft.) at 0° boom angle (no load)				64						

NOTE: () Boom angles are in degrees.
#LMI operating code. Refer to LMI manual for operating instructions.

Lifting Capacities at Zero Degree Boom Angle										
Boom Angle	Main Boom Length in Feet									
	31.7	43-A	54-B	64-C						
0°	9,950 (27.5)	4,950 (38.8)	2,400 (19.8)	650 (59.8)						

NOTE: () Reference radii in feet.

80034854A

**26 FT. FIXED AND 26 FT. - 45 FT. TELE OFFSETTABLE BOOM EXTENSION
WITH 3000 lb COUNTERWEIGHT**

ON OUTRIGGERS 50% EXTENDED - 360°

Radius in Feet	**26 ft. LENGTH		45 ft. LENGTH	
	#1405	#1407	#1409	#1411
	0° OFFSET	30° OFFSET	0° OFFSET	30° OFFSET
50	6,000 (72.6)			
55	4,800 (70.4)			
60	3,700 (68.1)			
65	2,750 (65.7)	3,950 (71.5)	3,800 (70.2)	
70	2,000 (63.4)	3,050 (68.9)	3,000 (68.1)	
75	1,350 (61.0)	2,300 (66.2)	2,300 (65.9)	2,800 (73.8)
80	800 (58.7)	1,600 (63.6)	1,700 (63.7)	2,700 (71.9)
85		1,050 (61.0)	1,200 (61.5)	2,500 (69.8)
90		550 (58.3)	750 (59.3)	1,900 (67.3)
95				1,400 (64.8)
100				950 (62.3)
105				550 (59.7)
Min. boom angle for indicated length (no load)	57°	58°	58°	59°
Max. boom length at 0° boom angle (no load)	64 ft.		64 ft.	

BOOM EXTENSION CAPACITY NOTES:

1. All capacities above the bold line are based on structural strength limitations.
2. 26 ft. and 45 ft. extension lengths may be used for single line lifting service.
3. Radii listed are for a fully extended boom with the boom extension erected. For main boom lengths less than fully extended, the rated loads are determined by boom angle. Use only the column which corresponds to the boom extension length and offset for which the machine is configured. For boom angles not shown, use the rating of the next lower boom angle.
WARNING: Operation of this machine with heavier loads than the capacities listed is strictly prohibited. Machine tipping with boom extension occurs rapidly and without advance warning.
4. Boom angle is the angle above or below horizontal of the longitudinal axis of the boom base section after lifting rated load.
5. Capacities listed are with outriggers properly extended and vertical jacks set only

NOTE: () Boom angles are in degrees. 80034859A

#LMI operating code. Refer to LMI manual for instructions.

**26 ft. capacities are applicable to both 26' fixed and 26' tele extension.

**RATED LIFTING CAPACITIES IN POUNDS WITH 3000 lb COUNTERWEIGHT
31.7 FT. - 128 FT. BOOM**

ON OUTRIGGERS 0% EXTENDED - 360°

Radius in Feet	#1801									
	Main Boom Length in Feet									
	31.7	43-A	54-B	64-C	75-D	86-E	97-F	107-G	118-H	128
8	60,700 (68.0)									
10	38,500 (64.0)	39,700 (71.3)								
12	27,200 (59.8)	28,250 (68.4)	28,900 (73.2)							
15	17,950 (53.1)	18,850 (63.9)	19,400 (69.7)	19,750 (73.2)						
20	10,100 (41.6)	11,000 (56.9)	11,450 (63.8)	11,750 (68.3)	12,000 (71.8)					
25	6,100 (24.2)	6,950 (48.3)	7,400 (58.2)	7,700 (63.8)	7,900 (68.1)	8,100 (71.2)				
30		4,350 (38.3)	4,800 (51.6)	5,050 (58.6)	5,250 (63.8)	5,400 (67.5)	5,550 (70.5)			
35		2,550 (25.2)	3,000 (44.3)	3,250 (53.1)	3,450 (59.3)	3,600 (63.8)	3,700 (67.2)	3,850 (69.7)	3,950 (72.0)	
40			1,700 (35.9)	1,950 (47.1)	2,150 (54.7)	2,250 (59.9)	2,400 (63.8)	2,500 (66.7)	2,600 (69.3)	2,650 (71.2)
45			700 (25.1)	950 (40.5)	1,150 (49.8)	1,300 (55.9)	1,400 (60.4)	1,450 (63.6)	1,550 (66.5)	1,650 (68.7)
50						500 (51.7)	600 (56.9)	700 (60.5)	750 (63.7)	800 (66.1)
Minimum boom angle (°) for indicated length (no load)		0	22	35	45	51	56	59	63	65
Maximum boom length (ft.) at 0° boom angle (no load)	43									

NOTE: () Boom angles are in degrees.

#LMI operating code. Refer to LMI manual for operating instructions.

Lifting Capacities at Zero Degree Boom Angle										
Boom Angle	Main Boom Length in Feet									
	31.7	43-A								
0°	4,850 (27.5)	1,400 (38.8)								

NOTE: () Reference radii in feet.

80034855A

**RATED LIFTING CAPACITIES IN POUNDS WITH 3000 lb COUNTERWEIGHT
31.7' - 128' BOOM WITH 26' FIXED or 26-45' TELE EXTENSION STOWED**

ON OUTRIGGERS 0% EXTENDED - 360°

Radius in Feet	#1802									
	Main Boom Length in Feet									
	31.7	43-A	54-B	64-C	75-D	86-E	97-F	107-G	118-H	128
8	59,550 (68.0)									
10	37,350 (64.0)	38,900 (71.3)								
12	26,050 (59.8)	27,450 (68.4)	28,300 (73.2)							
15	16,800 (53.1)	18,050 (63.9)	18,800 (69.7)	19,250 (73.2)						
20	8,950 (41.6)	10,200 (56.9)	10,850 (63.8)	11,250 (68.3)	11,550 (71.8)					
25	4,950 (24.2)	6,150 (48.3)	6,800 (58.2)	7,200 (63.8)	7,450 (68.1)	7,700 (71.2)				
30		3,550 (38.3)	4,200 (51.6)	4,550 (58.6)	4,800 (63.8)	5,000 (67.5)	5,200 (70.5)			
35		1,750 (25.2)	2,400 (44.3)	2,750 (53.1)	3,000 (59.3)	3,200 (63.8)	3,350 (67.2)	3,550 (69.7)	3,650 (72.0)	
40			1,100 (35.9)	1,450 (47.1)	1,700 (54.7)	1,850 (59.9)	2,050 (63.8)	2,200 (66.7)	2,300 (69.3)	2,400 (71.2)
45				450 (40.5)	700 (49.8)	900 (55.9)	1,050 (60.4)	1,150 (63.6)	1,250 (66.5)	1,400 (68.7)
50								400 (60.5)	450 (63.7)	550 (66.1)
Minimum boom angle (°) for indicated length (no load)		0	22	35	45	51	56	59	63	65
Maximum boom length (ft.) at 0° boom angle (no load)	43									

NOTE: () Boom angles are in degrees.

#LMI operating code. Refer to LMI manual for operating instructions.

Lifting Capacities at Zero Degree Boom Angle										
Boom Angle	Main Boom Length in Feet									
	31.7	43-A								
0°	3,700 (27.5)	600 (38.8)								

NOTE: () Reference radii in feet.

80034856A

**RATED LIFTING CAPACITIES IN POUNDS WITH NO COUNTERWEIGHT
31.7 FT. - 128 FT. BOOM**

ON OUTRIGGERS FULLY EXTENDED - 360°

Radius in Feet	#8001									
	Main Boom Length in Feet									
	31.7	43-A	54-B	64-C	75-D	86-E	97-F	107-G	118-H	128
8	100,000 (68.1)									
10	92,100 (64.0)	40,050 (71.3)								
12	76,600 (59.8)	40,050 (68.5)	40,350 (73.3)							
15	60,600 (53.1)	40,050 (64.0)	40,350 (69.9)	40,300 (73.5)						
20	44,100 (40.2)	40,050 (56.2)	40,350 (64.2)	40,300 (68.8)	34,100 (72.5)					
25	31,650 (21.8)	34,250 (47.5)	34,750 (57.9)	35,050 (63.9)	30,100 (68.4)	22,650 (71.5)				
30		26,750 (37.3)	27,450 (51.2)	27,800 (58.6)	27,100 (64.2)	20,400 (68.0)	17,800 (71.2)			
35		19,550 (23.6)	20,200 (43.8)	20,550 (52.9)	20,900 (59.6)	18,500 (64.3)	16,300 (68.0)	14,700 (70.8)	12,900 (73.2)	
40			15,450 (35.1)	15,800 (46.9)	16,100 (54.9)	16,350 (60.5)	15,100 (64.8)	13,650 (68.0)	12,050 (70.8)	10,850 (73.0)
45			12,150 (23.9)	12,500 (40.1)	12,800 (49.8)	13,000 (56.3)	13,200 (61.4)	12,550 (65.0)	11,300 (68.2)	10,250 (70.8)
50				10,200 (33.1)	10,450 (45.0)	10,650 (52.5)	10,850 (58.1)	11,050 (61.9)	10,650 (65.8)	9,650 (68.4)
55				8,300 (23.3)	8,550 (39.0)	8,750 (47.9)	8,950 (54.3)	9,100 (58.9)	9,250 (63.0)	8,750 (65.9)
60					7,050 (32.2)	7,250 (43.1)	7,400 (50.4)	7,550 (55.4)	7,700 (59.9)	7,800 (63.3)
65					5,800 (23.7)	6,000 (37.7)	6,150 (46.2)	6,300 (51.9)	6,400 (56.8)	6,550 (60.5)
70					*4,650 (9.2)	5,000 (31.6)	5,150 (41.7)	5,250 (48.1)	5,350 (53.6)	5,450 (57.6)
75						4,100 (24.0)	4,250 (36.8)	4,400 (44.2)	4,500 (50.3)	4,600 (54.6)
80						3,400 (12.7)	3,550 (31.2)	3,650 (39.9)	3,750 (46.8)	3,800 (51.6)
85							2,900 (24.5)	3,000 (35.3)	3,100 (43.1)	3,150 (48.4)
90							2,350 (15.0)	2,450 (30.0)	2,550 (39.1)	2,600 (45.0)
95								1,950 (23.6)	2,050 (34.8)	2,100 (41.5)
100								1,500 (14.6)	1,600 (29.9)	1,650 (37.7)
105									1,200 (24.0)	1,250 (33.5)
110									850 (16.2)	900 (28.7)
115										600 (23.1)
Minimum boom angle (°) for indicated length (no load)							0	5	8	17
Maximum boom length (ft.) at 0° boom angle (no load)							97			

NOTE: () Boom angles are in degrees.

*Loads are structurally limited.

#LMI operating code. Refer to LMI manual for operating instructions.

Lifting Capacities at Zero Degree Boom Angle										
Boom Angle	Main Boom Length in Feet									
	31.7	43-A	54-B	64-C	75-D	86-E				
0°	12,900 (27.5)	7,600 (38.8)	4,850 (19.8)	3,700 (59.8)	2,200 (70.8)	1,150 (81.8)				

NOTE: () Reference radii in feet.

80034955

**RATED LIFTING CAPACITIES IN POUNDS WITH NO COUNTERWEIGHT
31.7' - 128' BOOM WITH 26' FIXED or 26-45' TELE EXTENSION STOWED**

ON OUTRIGGERS FULLY EXTENDED - 360°

Radius in Feet	#8002									
	Main Boom Length in Feet									
	31.7	43-A	54-B	64-C	75-D	86-E	97-F	107-G	118-H	128
8	98,850 (68.1)									
10	90,950 (64.0)	39,250 (71.3)								
12	75,450 (59.8)	39,250 (68.5)	39,250 (73.3)							
15	59,450 (53.1)	39,250 (64.0)	39,250 (69.9)	39,250 (73.5)						
20	42,950 (40.2)	39,250 (56.2)	39,250 (64.2)	39,250 (68.8)	33,650 (72.5)					
25	30,500 (21.8)	33,450 (47.5)	34,150 (57.9)	34,550 (63.9)	29,650 (68.4)	22,250 (71.5)				
30		25,950 (37.3)	26,850 (51.2)	27,300 (58.6)	26,650 (64.2)	20,000 (68.0)	17,450 (71.2)			
35		18,750 (23.6)	19,600 (43.8)	20,050 (52.9)	20,450 (59.6)	18,100 (64.3)	15,950 (68.0)	14,400 (70.8)	12,600 (73.2)	
40			14,850 (35.1)	15,300 (46.9)	15,650 (54.9)	15,950 (60.5)	14,750 (64.8)	13,350 (68.0)	11,750 (70.8)	10,600 (73.0)
45			11,550 (23.9)	12,000 (40.1)	12,350 (49.8)	12,600 (56.3)	12,850 (61.4)	12,250 (65.0)	11,000 (68.2)	10,000 (70.8)
50				9,700 (33.1)	10,000 (45.0)	10,250 (52.5)	10,500 (58.1)	10,750 (61.9)	10,350 (65.8)	9,400 (68.4)
55				7,800 (23.3)	8,100 (39.0)	8,350 (47.9)	8,600 (54.3)	8,800 (58.9)	8,950 (63.0)	8,500 (65.9)
60					6,600 (32.2)	6,850 (43.1)	7,050 (50.4)	7,250 (55.4)	7,400 (59.9)	7,550 (63.3)
65					5,350 (23.7)	5,600 (37.7)	5,800 (46.2)	6,000 (51.9)	6,100 (56.8)	6,300 (60.5)
70					*4,200 (9.2)	4,600 (31.6)	4,800 (41.7)	4,950 (48.1)	5,050 (53.6)	5,200 (57.6)
75						3,700 (24.0)	3,900 (36.8)	4,100 (44.2)	4,200 (50.3)	4,350 (54.6)
80						3,000 (12.7)	3,200 (31.2)	3,350 (39.9)	3,450 (46.8)	3,550 (51.6)
85							2,550 (24.5)	2,700 (35.3)	2,800 (43.1)	2,900 (48.4)
90							2,000 (15.0)	2,150 (30.0)	2,250 (39.1)	2,350 (45.0)
95								1,650 (23.6)	1,750 (34.8)	1,850 (41.5)
100								1,200 (14.6)	1,300 (29.9)	1,400 (37.7)
105									900 (24.0)	1,000 (33.5)
110									550 (16.2)	650 (28.7)
Minimum boom angle (°) for indicated length (no load)							0	5	8	17
Maximum boom length (ft.) at 0° boom angle (no load)							97			

NOTE: () Boom angles are in degrees.

*Loads are structurally limited.

#LMI operating code. Refer to LMI manual for operating instructions.

Lifting Capacities at Zero Degree Boom Angle										
Boom Angle	Main Boom Length in Feet									
	31.7	43-A	54-B	64-C	75-D	86-E				
0°	11,750 (27.5)	6,800 (38.8)	4,250 (19.8)	3,200 (59.8)	1,750 (70.8)	750 (81.8)				

NOTE: () Reference radii in feet.

80034956

**RATED LIFTING CAPACITIES IN POUNDS WITH NO COUNTERWEIGHT
31.7' - 128' BOOM WITH 26' FIXED ERECTED or 26-45' EXT ERECTED, RETRACTED
ON OUTRIGGERS FULLY EXTENDED - 360°**

Radius in Feet	#8017									
	Main Boom Length in Feet									
	31.7	43-A	54-B	64-C	75-D	86-E	97-F	107-G	118-H	128
8	97,450 (68.1)									
10	89,550 (64.0)	37,700 (71.3)								
12	74,050 (59.8)	37,700 (68.5)	37,700 (73.3)							
15	58,050 (53.1)	37,700 (64.0)	37,700 (69.9)	37,700 (73.5)						
20	41,550 (40.2)	37,700 (56.2)	37,700 (64.2)	37,700 (68.8)	32,000 (72.5)					
25	29,100 (21.8)	31,900 (47.5)	32,500 (57.9)	32,900 (63.9)	28,000 (68.4)	20,550 (71.5)				
30		24,400 (37.3)	25,200 (51.2)	25,650 (58.6)	25,000 (64.2)	18,300 (68.0)	15,750 (71.2)			
35		17,200 (23.6)	17,950 (43.8)	18,400 (52.9)	18,800 (59.6)	16,400 (64.3)	14,250 (68.0)	12,650 (70.8)	10,900 (73.2)	
40			13,200 (35.1)	13,650 (46.9)	14,000 (54.9)	14,250 (60.5)	13,050 (64.8)	11,600 (68.0)	10,050 (70.8)	8,850 (73.0)
45			9,900 (23.9)	10,350 (40.1)	10,700 (49.8)	10,900 (56.3)	11,150 (61.4)	10,500 (65.0)	9,300 (68.2)	8,250 (70.8)
50				8,050 (33.1)	8,350 (45.0)	8,550 (52.5)	8,800 (58.1)	9,000 (61.9)	8,650 (65.8)	7,650 (68.4)
55				6,150 (23.3)	6,450 (39.0)	6,650 (47.9)	6,900 (54.3)	7,050 (58.9)	7,250 (63.0)	6,750 (65.9)
60					4,950 (32.2)	5,150 (43.1)	5,350 (50.4)	5,500 (55.4)	5,700 (59.9)	5,800 (63.3)
65					3,700 (23.7)	3,900 (37.7)	4,100 (46.2)	4,250 (51.9)	4,400 (56.8)	4,550 (60.5)
70					*2,550 (9.2)	2,900 (31.6)	3,100 (41.7)	3,200 (48.1)	3,350 (53.6)	3,450 (57.6)
75						2,000 (24.0)	2,200 (36.8)	2,350 (44.2)	2,500 (50.3)	2,600 (54.6)
80						1,300 (12.7)	1,500 (31.2)	1,600 (39.9)	1,750 (46.8)	1,800 (51.6)
85							850 (24.5)	950 (35.3)	1,100 (43.1)	1,150 (48.4)
90									550 (39.1)	600 (45.0)
Minimum boom angle (°) for indicated length (no load)				0	2	5	19	30	38	43
Maximum boom length (ft.) at 0° boom angle (no load)				64						

NOTE: () Boom angles are in degrees.

*Loads are structurally limited.

#LMI operating code. Refer to LMI manual for operating instructions.

Lifting Capacities at Zero Degree Boom Angle										
Boom Angle	Main Boom Length in Feet									
	31.7	43-A	54-B	64-C						
0°	10,350 (27.5)	5,250 (38.8)	2,600 (19.8)	1,550 (59.8)						

NOTE: () Reference radii in feet.

80034957

**RATED LIFTING CAPACITIES IN POUNDS WITH NO COUNTERWEIGHT
31.7' - 128' BOOM WITH 26-45' EXT ERECTED, EXTENDED**

ON OUTRIGGERS FULLY EXTENDED - 360°

Radius in Feet	#8018									
	Main Boom Length in Feet									
	31.7	43-A	54-B	64-C	75-D	86-E	97-F	107-G	118-H	128
8	97,050 (68.1)									
10	89,150 (64.0)	37,400 (71.3)								
12	73,650 (59.8)	37,400 (68.5)	37,400 (73.3)							
15	57,650 (53.1)	37,400 (64.0)	37,400 (69.9)	37,400 (73.5)						
20	41,150 (40.2)	37,400 (56.2)	37,400 (64.2)	37,400 (68.8)	31,850 (72.5)					
25	28,700 (21.8)	31,600 (47.5)	32,300 (57.9)	32,700 (63.9)	27,850 (68.4)	20,450 (71.5)				
30		24,100 (37.3)	25,000 (51.2)	25,450 (58.6)	24,850 (64.2)	18,200 (68.0)	15,650 (71.2)			
35		16,900 (23.6)	17,750 (43.8)	18,200 (52.9)	18,650 (59.6)	16,300 (64.3)	14,150 (68.0)	12,550 (70.8)	10,800 (73.2)	
40			13,000 (35.1)	13,450 (46.9)	13,850 (54.9)	14,150 (60.5)	12,950 (64.8)	11,500 (68.0)	9,950 (70.8)	8,750 (73.0)
45			9,700 (23.9)	10,150 (40.1)	10,550 (49.8)	10,800 (56.3)	11,050 (61.4)	10,400 (65.0)	9,200 (68.2)	8,150 (70.8)
50				7,850 (33.1)	8,200 (45.0)	8,450 (52.5)	8,700 (58.1)	8,900 (61.9)	8,550 (65.8)	7,550 (68.4)
55				5,950 (23.3)	6,300 (39.0)	6,550 (47.9)	6,800 (54.3)	6,950 (58.9)	7,150 (63.0)	6,650 (65.9)
60					4,800 (32.2)	5,050 (43.1)	5,250 (50.4)	5,400 (55.4)	5,600 (59.9)	5,700 (63.3)
65					3,550 (23.7)	3,800 (37.7)	4,000 (46.2)	4,150 (51.9)	4,300 (56.8)	4,450 (60.5)
70					*2,400 (9.2)	2,800 (31.6)	3,000 (41.7)	3,100 (48.1)	3,250 (53.6)	3,350 (57.6)
75						1,900 (24.0)	2,100 (36.8)	2,250 (44.2)	2,400 (50.3)	2,500 (54.6)
80						1,200 (12.7)	1,400 (31.2)	1,500 (39.9)	1,650 (46.8)	1,700 (51.6)
85							750 (24.5)	850 (35.3)	1,000 (43.1)	1,050 (48.4)
90									450 (39.1)	500 (45.0)
Minimum boom angle (°) for indicated length (no load)				0	3	6	20	31	39	44
Maximum boom length (ft.) at 0° boom angle (no load)				64						

NOTE: () Boom angles are in degrees.

*Loads are structurally limited.

#LMI operating code. Refer to LMI manual for operating instructions.

Lifting Capacities at Zero Degree Boom Angle										
Boom Angle	Main Boom Length in Feet									
	31.7	43-A	54-B	64-C						
0°	9,950 (27.5)	4,950 (38.8)	2,400 (19.8)	1,350 (59.8)						

NOTE: () Reference radii in feet.

80034958

**RATED LIFTING CAPACITIES IN POUNDS WITH NO COUNTERWEIGHT
31.7 FT. - 128 FT. BOOM**

ON OUTRIGGERS FULLY EXTENDED - OVER REAR

Radius in Feet	#8003									
	Main Boom Length in Feet									
	31.7	43-A	54-B	64-C	75-D	86-E	97-F	107-G	118-H	128
8	100,000 (68.1)									
10	92,100 (64.0)	40,050 (71.3)								
12	76,600 (59.8)	40,050 (68.5)	40,350 (73.3)							
15	60,600 (53.1)	40,050 (64.0)	40,350 (69.9)	40,300 (73.5)						
20	44,100 (40.2)	40,050 (56.2)	40,350 (64.2)	40,300 (68.8)	34,100 (72.5)					
25	31,650 (21.8)	34,250 (47.5)	34,750 (57.9)	35,050 (63.9)	30,100 (68.4)	22,650 (71.5)				
30		27,050 (37.3)	27,500 (51.2)	27,800 (58.6)	27,100 (64.2)	20,400 (68.0)	17,800 (71.2)			
35		21,750 (23.6)	22,350 (43.8)	22,650 (53.0)	22,900 (59.7)	18,500 (64.3)	16,300 (68.0)	14,700 (70.8)	12,900 (73.2)	
40			17,550 (35.2)	17,900 (46.9)	18,150 (54.9)	17,050 (60.5)	15,100 (64.8)	13,650 (68.0)	12,050 (70.8)	10,850 (73.0)
45			14,100 (24.0)	14,450 (40.2)	14,700 (49.9)	14,900 (56.5)	14,000 (61.5)	12,550 (65.0)	11,300 (68.2)	10,250 (70.8)
50				11,850 (32.3)	12,100 (44.5)	12,300 (52.2)	12,450 (57.9)	11,750 (62.0)	10,650 (65.8)	9,650 (68.4)
55				9,950 (23.3)	10,200 (39.1)	10,400 (48.1)	10,550 (54.5)	10,700 (59.1)	10,000 (63.2)	8,750 (65.9)
60					8,550 (32.3)	8,750 (43.2)	8,900 (50.6)	9,050 (55.7)	9,200 (60.3)	7,850 (63.3)
65					7,250 (23.8)	7,400 (37.8)	7,550 (46.4)	7,700 (52.2)	7,850 (57.2)	7,000 (60.6)
70					*4,650 (9.2)	6,300 (31.7)	6,450 (41.9)	6,550 (48.4)	6,700 (54.0)	6,300 (57.9)
75						5,350 (24.2)	5,500 (37.0)	5,600 (44.5)	5,750 (50.7)	5,700 (55.0)
80						*4,400 (12.8)	4,700 (31.4)	4,800 (40.2)	4,900 (47.2)	5,000 (52.0)
85							4,000 (24.7)	4,100 (35.5)	4,200 (43.5)	4,300 (48.8)
90							3,350 (15.2)	3,450 (30.2)	3,550 (39.5)	3,650 (45.5)
95								2,900 (23.8)	3,000 (35.1)	3,100 (41.9)
100								2,450 (14.8)	2,550 (30.2)	2,600 (38.1)
105									2,100 (24.4)	2,150 (33.9)
110									1,700 (16.5)	1,750 (29.1)
115										1,400 (23.5)
120										*1,100 (15.8)
Minimum boom angle (°) for indicated length (no load)							0	5	8	10
Maximum boom length (ft.) at 0° boom angle (no load)							97			

NOTE: () Boom angles are in degrees.

*Loads are structurally limited.

#LMI operating code. Refer to LMI manual for operating instructions.

Lifting Capacities at Zero Degree Boom Angle										
Boom Angle	Main Boom Length in Feet									
	31.7	43-A	54-B	64-C	75-D	86-E				
0°	12,900 (27.5)	7,600 (38.8)	4,850 (19.8)	3,700 (59.8)	2,200 (70.8)	1,150 (81.8)				

NOTE: () Reference radii in feet.

80034959

**RATED LIFTING CAPACITIES IN POUNDS WITH NO COUNTERWEIGHT
31.7' - 128' BOOM WITH 26' FIXED or 26-45' TELE EXTENSION STOWED**

ON OUTRIGGERS FULLY EXTENDED - OVER REAR

Radius in Feet	#8004									
	Main Boom Length in Feet									
	31.7	43-A	54-B	64-C	75-D	86-E	97-F	107-G	118-H	128
8	98,850 (68.1)									
10	90,950 (64.0)	39,250 (71.3)								
12	75,450 (59.8)	39,250 (68.5)	39,250 (73.3)							
15	59,450 (53.1)	39,250 (64.0)	39,250 (69.9)	39,250 (73.5)						
20	42,950 (40.2)	39,250 (56.2)	39,250 (64.2)	39,250 (68.8)	33,650 (72.5)					
25	30,500 (21.8)	33,450 (47.5)	34,150 (57.9)	34,550 (63.9)	29,650 (68.4)	22,250 (71.5)				
30		26,250 (37.3)	26,900 (51.2)	27,300 (58.6)	26,650 (64.2)	20,000 (68.0)	17,450 (71.2)			
35		20,950 (23.6)	21,750 (43.8)	22,150 (53.0)	22,450 (59.7)	18,100 (64.3)	15,950 (68.0)	14,400 (70.8)	12,600 (73.2)	
40			16,950 (35.2)	17,400 (46.9)	17,700 (54.9)	16,650 (60.5)	14,750 (64.8)	13,350 (68.0)	11,750 (70.8)	10,600 (73.0)
45			13,500 (24.0)	13,950 (40.2)	14,250 (49.9)	14,500 (56.5)	13,650 (61.5)	12,250 (65.0)	11,000 (68.2)	10,000 (70.8)
50				11,350 (32.3)	11,650 (44.5)	11,900 (52.2)	12,100 (57.9)	11,450 (62.0)	10,350 (65.8)	9,400 (68.4)
55				9,450 (23.3)	9,750 (39.1)	10,000 (48.1)	10,200 (54.5)	10,400 (59.1)	9,700 (63.2)	8,500 (65.9)
60					8,100 (32.3)	8,350 (43.2)	8,550 (50.6)	8,750 (55.7)	8,900 (60.3)	7,600 (63.3)
65					6,800 (23.8)	7,000 (37.8)	7,200 (46.4)	7,400 (52.2)	7,550 (57.2)	6,750 (60.6)
70					*4,200 (9.2)	5,900 (31.7)	6,100 (41.9)	6,250 (48.4)	6,400 (54.0)	6,050 (57.9)
75						4,950 (24.2)	5,150 (37.0)	5,300 (44.5)	5,450 (50.7)	5,450 (55.0)
80						*4,000 (12.8)	4,350 (31.4)	4,500 (40.2)	4,600 (47.2)	4,750 (52.0)
85							3,650 (24.7)	3,800 (35.5)	3,900 (43.5)	4,050 (48.8)
90							3,000 (15.2)	3,150 (30.2)	3,250 (39.5)	3,400 (45.5)
95							2,600 (23.8)	2,700 (35.1)	2,850 (41.9)	
100							2,150 (14.8)	2,250 (30.2)	2,350 (38.1)	
105								1,800 (24.4)	1,900 (33.9)	
110								1,400 (16.5)	1,500 (29.1)	
115									1,150 (23.5)	
120										*850 (15.8)
Minimum boom angle (°) for indicated length (no load)							0	5	8	10
Maximum boom length (ft.) at 0° boom angle (no load)							97			

NOTE: () Boom angles are in degrees.

*Loads are structurally limited.

#LMI operating code. Refer to LMI manual for operating instructions.

Lifting Capacities at Zero Degree Boom Angle										
Boom Angle	Main Boom Length in Feet									
	31.7	43-A	54-B	64-C	75-D	86-E				
0°	11,750 (27.5)	6,800 (38.8)	4,250 (19.8)	3,200 (59.8)	1,750 (70.8)	750 (81.8)				

NOTE: () Reference radii in feet.

80034960

**26 FT. FIXED AND 26 FT. - 45 FT. TELE OFFSETTABLE BOOM EXTENSION
WITH NO COUNTERWEIGHT**

ON OUTRIGGERS FULLY EXTENDED - 360°

Radius in Feet	**26 ft. LENGTH		45 ft. LENGTH	
	#8005	#8007	#8009	#8011
	0° OFFSET	30° OFFSET	0° OFFSET	30° OFFSET
50	6,000 (72.6)			
55	5,800 (70.8)			
60	5,500 (69.0)			
65	5,200 (67.0)	4,900 (72.1)	4,050 (70.4)	
70	4,850 (65.0)	4,650 (69.9)	4,000 (68.8)	
75	4,500 (62.9)	4,400 (67.7)	3,950 (67.2)	2,800 (73.8)
80	3,700 (60.5)	4,150 (65.4)	3,900 (65.6)	2,700 (71.9)
85	3,000 (58.0)	3,750 (63.0)	3,800 (63.9)	2,650 (70.0)
90	2,400 (55.4)	3,050 (60.2)	3,350 (61.8)	2,600 (68.0)
95	1,900 (52.8)	2,400 (57.3)	2,750 (59.4)	2,550 (66.0)
100	1,450 (50.2)	1,950 (54.5)	2,250 (57.1)	2,500 (63.9)
105	1,000 (47.4)	1,450 (51.5)	1,800 (54.7)	2,450 (61.8)
110	650 (44.5)	1,000 (48.4)	1,450 (52.3)	2,200 (59.3)
115		650 (45.2)	1,100 (49.8)	1,750 (56.5)
120			750 (47.2)	1,350 (53.7)
125			450 (44.5)	1,000 (50.7)
130				650 (47.7)
Min. boom angle for indicated length (no load)	43°	43°	44°	45°
Max. boom length at 0° boom angle (no load)	64 ft.		64 ft.	

BOOM EXTENSION CAPACITY NOTES:

1. All capacities above the bold line are based on structural strength limitations.
2. 26 ft. and 45 ft. extension lengths may be used for single line lifting service.
3. Radii listed are for a fully extended boom with the boom extension erected. For main boom lengths less than fully extended, the rated loads are determined by boom angle. Use only the column which corresponds to the boom extension length and offset for which the machine is configured. For boom angles not shown, use the rating of the next lower boom angle.
4. Boom angle is the angle above or below horizontal of the longitudinal axis of the boom base section after lifting rated load.
5. Capacities listed are with outriggers properly extended and vertical jacks set only.

WARNING: Operation of this machine with heavier loads than the capacities listed is strictly prohibited. Machine tipping with boom extension occurs rapidly and without advance warning.

NOTE: () Boom angles are in degrees.

80034967

#LMI operating code. Refer to LMI manual for instructions.

**26 ft. capacities are applicable to both 26' fixed and 26' tele extension.

**26 FT. FIXED AND 26 FT. - 45 FT. TELE OFFSETTABLE BOOM EXTENSION
WITH NO COUNTERWEIGHT**

ON OUTRIGGERS FULLY EXTENDED - OVER REAR

Radius in Feet	**26 ft. LENGTH		45 ft. LENGTH	
	#8006	#8008	#8010	#8012
	0° OFFSET	30° OFFSET	0° OFFSET	30° OFFSET
50	6,000 (72.6)			
55	5,800 (70.8)			
60	5,500 (69.0)			
65	5,200 (67.0)	4,900 (72.1)	4,050 (70.4)	
70	4,850 (65.0)	4,650 (69.9)	4,000 (68.8)	
75	4,500 (62.9)	4,400 (67.7)	3,950 (67.2)	2,800 (73.8)
80	4,250 (60.8)	4,150 (65.4)	3,900 (65.6)	2,700 (71.9)
85	3,950 (58.6)	4,000 (63.1)	3,800 (63.9)	2,650 (70.0)
90	3,450 (56.1)	3,800 (60.7)	3,550 (62.0)	2,600 (68.0)
95	2,900 (53.6)	3,450 (58.1)	3,250 (59.9)	2,550 (66.0)
100	2,400 (50.9)	2,850 (55.2)	3,000 (57.8)	2,500 (63.9)
105	1,900 (48.1)	2,350 (52.2)	2,700 (55.6)	2,450 (61.8)
110	1,500 (45.2)	1,950 (49.1)	2,300 (53.2)	2,400 (59.5)
115	1,150 (42.2)	1,450 (45.8)	1,900 (50.7)	2,350 (57.2)
120	800 (39.0)	1,050 (42.3)	1,550 (48.1)	2,150 (54.5)
125	500 (35.5)	700 (38.6)	1,250 (45.5)	1,750 (51.5)
130		400 (34.5)	950 (42.7)	1,400 (48.5)
135			650 (39.7)	1,050 (45.2)
140			450 (36.7)	750 (41.7)
145				450 (37.9)
Min. boom angle for indicated length (no load)	34°	34°	36°	37°
Max. boom length at 0° boom angle (no load)	64 ft.		64 ft.	

BOOM EXTENSION CAPACITY NOTES:

1. All capacities above the bold line are based on structural strength limitations
2. 26 ft. and 45 ft. extension lengths may be used for single line lifting service.
3. Radii listed are for a fully extended boom with the boom extension erected. For main boom lengths less than fully extended, the rated loads are determined by boom angle. Use only the column which corresponds to the boom extension length and offset for which the machine is configured. For boom angles not shown, use the rating of the next lower boom angle.

WARNING: Operation of this machine with heavier loads than the capacities listed is strictly prohibited. Machine tipping with boom extension occurs rapidly and without advance warning.
4. Boom angle is the angle above or below horizontal of the longitudinal axis of the boom base section after lifting rated load.
5. Capacities listed are with outriggers properly extended and vertical jacks set only.

NOTE: () Boom angles are in degrees. 80034968

#LMI operating code. Refer to LMI manual for instructions.

*Capacities are structurally limited.

**26 ft. capacities are applicable to both 26' fixed and 26' tele extension.

RATED LIFTING CAPACITIES IN POUNDS WITH NO COUNTERWEIGHT
31.7 FT. - 128 FT. BOOM
ON OUTRIGGERS 50% EXTENDED - 360°

Radius in Feet	#8401									
	Main Boom Length in Feet									
	31.7	43-A	54-B	64-C	75-D	86-E	97-F	107-G	118-H	128
8	100,000 (68.1)									
10	92,100 (64.0)	40,050 (71.3)								
12	76,600 (59.8)	40,050 (68.5)	40,350 (73.3)							
15	48,050 (53.1)	40,050 (64.0)	40,350 (69.9)	40,300 (73.5)						
20	25,200 (40.2)	26,300 (56.1)	26,950 (64.0)	27,400 (68.6)	27,800 (72.3)					
25	15,650 (21.8)	16,750 (47.4)	17,300 (57.7)	17,600 (63.5)	17,900 (68.0)	18,150 (71.3)				
30		11,400 (37.2)	11,950 (51.0)	12,250 (58.2)	12,550 (63.6)	12,750 (67.6)	13,000 (70.8)			
35		8,200 (25.2)	8,550 (44.4)	8,850 (53.2)	9,100 (59.6)	9,300 (64.1)	9,500 (67.7)	9,650 (70.4)	9,850 (72.9)	
40			6,350 (35.9)	6,650 (47.2)	6,900 (54.9)	7,050 (60.2)	7,250 (64.3)	7,400 (67.4)	7,550 (70.2)	7,700 (72.3)
45			4,600 (25.2)	4,900 (40.6)	5,150 (50.0)	5,300 (56.2)	5,450 (60.8)	5,600 (64.2)	5,750 (67.3)	5,850 (69.7)
50				3,600 (32.9)	3,800 (44.6)	3,950 (51.9)	4,100 (57.3)	4,250 (61.1)	4,350 (64.5)	4,400 (67.0)
55				2,550 (23.1)	2,750 (38.7)	2,900 (47.4)	3,050 (53.5)	3,150 (57.8)	3,250 (61.6)	3,350 (64.4)
60					1,900 (31.9)	2,050 (42.6)	2,200 (49.6)	2,300 (54.4)	2,400 (58.6)	2,450 (61.7)
65					1,200 (23.4)	1,350 (37.2)	1,500 (45.5)	1,550 (50.9)	1,650 (55.6)	1,750 (58.9)
70					600 (9.0)	750 (31.1)	900 (41.0)	950 (47.2)	1,050 (52.4)	1,100 (56.1)
75								450 (43.3)	550 (49.1)	600 (53.2)
Minimum boom angle (°) for indicated length (no load)					0	26	36	43	48	52
Maximum boom length (ft.) at 0° boom angle (no load)					75					

NOTE: () Boom angles are in degrees.
 #LMI operating code. Refer to LMI manual for operating instructions.

Lifting Capacities at Zero Degree Boom Angle										
Boom Angle	Main Boom Length in Feet									
	31.7	43-A	54-B	64-C	75-D					
0°	12,900 (27.5)	6200 (38.8)	3,250 (19.8)	1,650 (59.8)	500 (70.8)					

NOTE: () Reference radii in feet.

80034961

**RATED LIFTING CAPACITIES IN POUNDS WITH NO COUNTERWEIGHT
31.7' - 128' BOOM WITH 26' FIXED or 26-45' TELE EXTENSION STOWED
ON OUTRIGGERS 50% EXTENDED - 360°**

Radius in Feet	#8402									
	Main Boom Length in Feet									
	31.7	43-A	54-B	64-C	75-D	86-E	97-F	107-G	118-H	128
8	98,850 (68.1)									
10	90,950 (64.0)	39,250 (71.3)								
12	75,450 (59.8)	39,250 (68.5)	39,250 (73.3)							
15	46,900 (53.1)	39,250 (64.0)	39,250 (69.9)	39,250 (73.5)						
20	24,050 (40.2)	25,500 (56.1)	26,350 (64.0)	26,900 (68.6)	27,350 (72.3)					
25	14,500 (21.8)	15,950 (47.4)	16,700 (57.7)	17,100 (63.5)	17,450 (68.0)	17,750 (71.3)				
30		10,600 (37.2)	11,350 (51.0)	11,750 (58.2)	12,100 (63.6)	12,350 (67.6)	12,650 (70.8)			
35		7,400 (25.2)	7,950 (44.4)	8,350 (53.2)	8,650 (59.6)	8,900 (64.1)	9,150 (67.7)	9,350 (70.4)	9,550 (72.9)	
40			5,750 (35.9)	6,150 (47.2)	6,450 (54.9)	6,650 (60.2)	6,900 (64.3)	7,100 (67.4)	7,250 (70.2)	7,450 (72.3)
45			4,000 (25.2)	4,400 (40.6)	4,700 (50.0)	4,900 (56.2)	5,100 (60.8)	5,300 (64.2)	5,450 (67.3)	5,600 (69.7)
50				3,100 (32.9)	3,350 (44.6)	3,550 (51.9)	3,750 (57.3)	3,950 (61.1)	4,050 (64.5)	4,150 (67.0)
55				2,050 (23.1)	2,300 (38.7)	2,500 (47.4)	2,700 (53.5)	2,850 (57.8)	2,950 (61.6)	3,100 (64.4)
60					1,450 (31.9)	1,650 (42.6)	1,850 (49.6)	2,000 (54.4)	2,100 (58.6)	2,200 (61.7)
65					750 (23.4)	950 (37.2)	1,150 (45.5)	1,250 (50.9)	1,350 (55.6)	1,500 (58.9)
70							550 (41.0)	650 (47.2)	750 (52.4)	850 (56.1)
Minimum boom angle (°) for indicated length (no load)					0	26	36	43	48	52
Maximum boom length (ft.) at 0° boom angle (no load)					75					

NOTE: () Boom angles are in degrees.
#LMI operating code. Refer to LMI manual for operating instructions.

Lifting Capacities at Zero Degree Boom Angle										
Boom Angle	Main Boom Length in Feet									
	31.7	43-A	54-B	64-C						
0°	11,750 (27.5)	5,400 (38.8)	2,650 (19.8)	1,150 (59.8)						

NOTE: () Reference radii in feet.

80034962

RATED LIFTING CAPACITIES IN POUNDS WITH NO COUNTERWEIGHT
31.7' - 128' BOOM WITH 26' FIXED ERECTED or 26-45' EXT ERECTED, RETRACTED
ON OUTRIGGERS 50% EXTENDED - 360°

Radius in Feet	#8417									
	Main Boom Length in Feet									
	31.7	43-A	54-B	64-C	75-D	86-E	97-F	107-G	118-H	128
8	97,450 (68.1)									
10	89,550 (64.0)	37,700 (71.3)								
12	74,050 (59.8)	37,700 (68.5)	37,700 (73.3)							
15	45,500 (53.1)	37,700 (64.0)	37,700 (69.9)	37,700 (73.5)						
20	22,650 (40.2)	23,950 (56.1)	24,700 (64.0)	25,250 (68.6)	25,700 (72.3)					
25	13,100 (21.8)	14,400 (47.4)	15,050 (57.7)	15,450 (63.5)	15,800 (68.0)	16,050 (71.3)				
30		9,050 (37.2)	9,700 (51.0)	10,100 (58.2)	10,450 (63.6)	10,650 (67.6)	10,950 (70.8)			
35		5,850 (25.2)	6,300 (44.4)	6,700 (53.2)	7,000 (59.6)	7,200 (64.1)	7,450 (67.7)	7,600 (70.4)	7,850 (72.9)	
40			4,100 (35.9)	4,500 (47.2)	4,800 (54.9)	4,950 (60.2)	5,200 (64.3)	5,350 (67.4)	5,550 (70.2)	5,700 (72.3)
45			2,350 (25.2)	2,750 (40.6)	3,050 (50.0)	3,200 (56.2)	3,400 (60.8)	3,550 (64.2)	3,750 (67.3)	3,850 (69.7)
50				1,450 (32.9)	1,700 (44.6)	1,850 (51.9)	2,050 (57.3)	2,200 (61.1)	2,350 (64.5)	2,400 (67.0)
55					650 (38.7)	800 (47.4)	1,000 (53.5)	1,100 (57.8)	1,250 (61.6)	1,350 (64.4)
Minimum boom angle (°) for indicated length (no load)			0	23	38	46	52	56	59	62
Maximum boom length (ft.) at 0° boom angle (no load)			54							

NOTE: () Boom angles are in degrees.

#LMI operating code. Refer to LMI manual for operating instructions.

Lifting Capacities at Zero Degree Boom Angle										
Boom Angle	Main Boom Length in Feet									
	31.7	43-A	54-B							
0°	10,350 (27.5)	3,850 (38.8)	1,000 (19.8)							

NOTE: () Reference radii in feet.

80034963

**RATED LIFTING CAPACITIES IN POUNDS WITH NO COUNTERWEIGHT
31.7' - 128' BOOM WITH 26-45' EXT ERECTED, EXTENDED
ON OUTRIGGERS 50% EXTENDED - 360°**

Radius in Feet	#8418									
	Main Boom Length in Feet									
	31.7	43-A	54-B	64-C	75-D	86-E	97-F	107-G	118-H	128
8	97,050 (68.1)									
10	89,150 (64.0)	37,400 (71.3)								
12	73,650 (59.8)	37,400 (68.5)	37,400 (73.3)							
15	45,100 (53.1)	37,400 (64.0)	37,400 (69.9)	37,400 (73.5)						
20	22,250 (40.2)	23,650 (56.1)	24,500 (64.0)	25,050 (68.6)	25,550 (72.3)					
25	12,700 (21.8)	14,100 (47.4)	14,850 (57.7)	15,250 (63.5)	15,650 (68.0)	15,950 (71.3)				
30		8,750 (37.2)	9,500 (51.0)	9,900 (58.2)	10,300 (63.6)	10,550 (67.6)	10,850 (70.8)			
35		5,550 (25.2)	6,100 (44.4)	6,500 (53.2)	6,850 (59.6)	7,100 (64.1)	7,350 (67.7)	7,500 (70.4)	7,750 (72.9)	
40			3,900 (35.9)	4,300 (47.2)	4,650 (54.9)	4,850 (60.2)	5,100 (64.3)	5,250 (67.4)	5,450 (70.2)	5,600 (72.3)
45			2,150 (25.2)	2,550 (40.6)	2,900 (50.0)	3,100 (56.2)	3,300 (60.8)	3,450 (64.2)	3,650 (67.3)	3,750 (69.7)
50				1,250 (32.9)	1,550 (44.6)	1,750 (51.9)	1,950 (57.3)	2,100 (61.1)	2,250 (64.5)	2,300 (67.0)
55						700 (47.4)	900 (53.5)	1,000 (57.8)	1,150 (61.6)	1,250 (64.4)
Minimum boom angle (°) for indicated length (no load)			0	25	39	47	52	56	60	62
Maximum boom length (ft.) at 0° boom angle (no load)			54							

NOTE: () Boom angles are in degrees.

#LMI operating code. Refer to LMI manual for operating instructions.

Lifting Capacities at Zero Degree Boom Angle										
Boom Angle	Main Boom Length in Feet									
	31.7	43-A	54-B							
0°	9,950 (27.5)	3,550 (38.8)	800 (19.8)							

NOTE: () Reference radii in feet.

80034964

**26 FT. FIXED AND 26 FT. - 45 FT. TELE OFFSETTABLE BOOM EXTENSION
WITH NO COUNTERWEIGHT**

ON OUTRIGGERS 50% EXTENDED - 360°

Radius in Feet	**26 ft. LENGTH		45 ft. LENGTH	
	#8405	#8407	#8409	#8411
	0° OFFSET	30° OFFSET	0° OFFSET	30° OFFSET
50	4,400 (71.9)			
55	3,200 (69.6)			
60	2,250 (67.3)			
65	1,400 (65.0)	2,650 (70.6)	2,450 (69.2)	
70	800 (62.7)	1,850 (68.0)	1,750 (67.1)	
75		1,150 (65.4)	1,150 (65.0)	2,750 (73.7)
80		600 (62.9)	600 (62.8)	2,050 (71.2)
85				1,450 (68.7)
90				950 (66.3)
95				500 (63.8)
Min. boom angle for indicated length (no load)	62°	62°	62°	63°
Max. boom length at 0° boom angle (no load)	54 ft.		54 ft.	

**BOOM EXTENSION CAPACITY
NOTES:**

1. All capacities above the bold line are based on structural strength limitations.
2. 26 ft. and 45 ft. extension lengths may be used for single line lifting service.
3. Radii listed are for a fully extended boom with the boom extension erected. For main boom lengths less than fully extended, the rated loads are determined by boom angle. Use only the column which corresponds to the boom extension length and offset for which the machine is configured. For boom angles not shown, use the rating of the next lower boom angle.
WARNING: Operation of this machine with heavier loads than the capacities listed is strictly prohibited. Machine tipping with boom extension occurs rapidly and without advance warning.
4. Boom angle is the angle above or below horizontal of the longitudinal axis of the boom base section after lifting rated load.
5. Capacities listed are with outriggers properly extended and vertical jacks set only

NOTE: () Boom angles are in degrees.

80034969

#LMI operating code. Refer to LMI manual for instructions.

**26 ft. capacities are applicable to both 26' fixed and 26' tele extension.

**RATED LIFTING CAPACITIES IN POUNDS WITH NO COUNTERWEIGHT
31.7 FT. - 128 FT. BOOM**

ON OUTRIGGERS 0% EXTENDED - 360°

Radius in Feet	#8801									
	Main Boom Length in Feet									
	31.7	43-A	54-B	64-C	75-D	86-E	97-F	107-G	118-H	128
8	47,600 (68.0)									
10	29,700 (64.0)	30,900 (71.3)								
12	20,600 (59.8)	21,650 (68.4)	22,300 (73.1)							
15	13,100 (53.1)	14,050 (63.9)	14,600 (69.7)	14,950 (73.1)						
20	7,000 (41.6)	7,850 (56.9)	8,300 (64.4)	8,400 (68.7)	8,600 (72.1)	8,800 (74.7)				
25	3,550 (24.2)	4,400 (48.3)	4,850 (58.2)	5,100 (63.7)	5,350 (68.0)	5,500 (71.1)	5,650 (73.5)			
30		2,300 (38.3)	2,700 (51.6)	2,950 (58.5)	3,150 (63.7)	3,300 (67.4)	3,450 (70.3)	3,550 (72.4)		
35		800 (25.2)	1,250 (44.3)	1,500 (53.0)	1,700 (59.3)	1,850 (63.7)	1,950 (67.0)	2,050 (69.5)	2,150 (71.7)	2,250 (73.4)
40				450 (47.1)	650 (54.6)	750 (59.8)	850 (63.7)	950 (66.5)	1,050 (69.0)	1,100 (70.9)
Minimum boom angle (°) for indicated length (no load)	0	22	40	47	54	59	62	65	67	69
Maximum boom length (ft.) at 0° boom angle (no load)	32									

NOTE: () Boom angles are in degrees.

#LMI operating code. Refer to LMI manual for operating instructions.

Lifting Capacities at Zero Degree Boom Angle										
Boom Angle	Main Boom Length in Feet									
	31.7									
0°	2,500 (27.5)									

NOTE: () Reference radii in feet.

80034965

**RATED LIFTING CAPACITIES IN POUNDS WITH NO COUNTERWEIGHT
31.7' - 128' BOOM WITH 26' FIXED or 26-45' TELE EXTENSION STOWED**

ON OUTRIGGERS 0% EXTENDED - 360°

Radius in Feet	#8802									
	Main Boom Length in Feet									
	31.7	43-A	54-B	64-C	75-D	86-E	97-F	107-G	118-H	128
8	46,450 (68.0)									
10	28,550 (64.0)	30,100 (71.3)								
12	19,450 (59.8)	20,850 (68.4)	21,700 (73.1)							
15	11,950 (53.1)	13,250 (63.9)	14,000 (69.7)	14,450 (73.1)						
20	5,850 (41.6)	7,050 (56.9)	7,700 (64.4)	7,900 (68.7)	8,150 (72.1)	8,400 (74.7)				
25	2,400 (24.2)	3,600 (48.3)	4,250 (58.2)	4,600 (63.7)	4,900 (68.0)	5,100 (71.1)	5,300 (73.5)			
30		1,500 (38.3)	2,100 (51.6)	2,450 (58.5)	2,700 (63.7)	2,900 (67.4)	3,100 (70.3)	3,250 (72.4)		
35			650 (44.3)	1,000 (53.0)	1,250 (59.3)	1,450 (63.7)	1,600 (67.0)	1,750 (69.5)	1,850 (71.7)	2,000 (73.4)
40							500 (63.7)	650 (66.5)	750 (69.0)	850 (70.9)
Minimum boom angle (°) for indicated length (no load)	0	22	40	47	54	59	62	65	67	69
Maximum boom length (ft.) at 0° boom angle (no load)	32									

NOTE: () Boom angles are in degrees.

#LMI operating code. Refer to LMI manual for operating instructions.

Lifting Capacities at Zero Degree Boom Angle										
Boom Angle	Main Boom Length in Feet									
	31.7									
0°	1,350 (27.5)									

NOTE: () Reference radii in feet.

80034966